



**DEPRAG**  
machines unlimited

## Air Turbine Drill

- suitable for use in potentially explosion-hazardous environments
- excellent power-to-weight ratio
- with turbine drive
- highly durable

This new drill is primarily used in manual core-drilling applications when equipped with a drill-rod. This drill is exceptionally robust when drilling soft- or semi-solid coal, shale or other soft rock formations.

Due to its design and layout, this drill corresponds to the highest safety requirements as stipulated for the use in explosion-hazardous environments.

This is a worldwide innovation where the first of our drills is equipped with a turbine drive. The drill does not require airline lubrication (oilfree!). This tool outputs an enormous torque of 45 Nm (400 in.lbs.) at maximum power! The innovative regulator of this drill guarantees an extreme long lifespan. The drill is intended for dry-drilling. The simple to use drill-chuck comes in a particular hex size or can be customized according to a customers' requirement. The frontal exhaust air helps with keeping the drill location clear of debris.

### **Suitable for use in potentially explosion-hazardous environments**

Due to its design and layout, this drill corresponds to the highest safety requirements as stipulated for the use in explosion-hazardous environments IM2c II2GcIIBT5(100°C)X).

### **Excellent power-to-weight ratio**

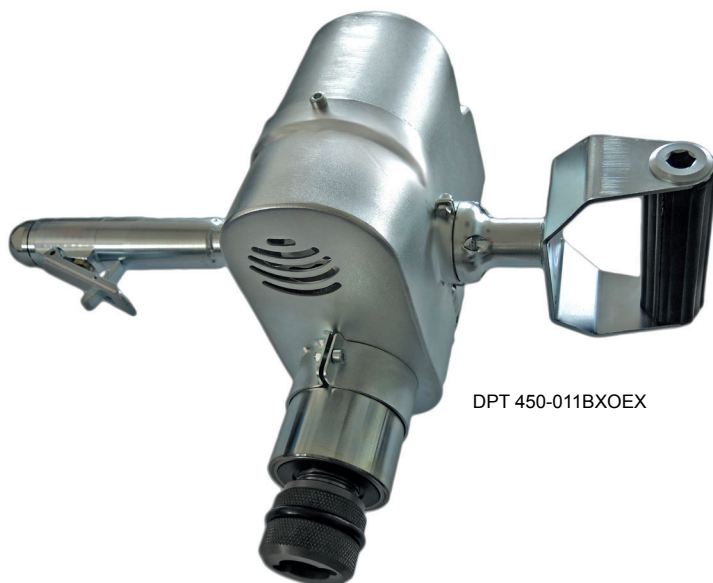
The total weight of the drill is only 8.7 kg (19 lbs.) and therefore the power-to-weight ratio is an advantage!

### **Turbine drive**

Our turbine drill is equipped with a powerful turbine drive that offers an exceedingly high power when compared to conventional air tools. Our turbine drill operated oilfree and is therefore practically maintenance free. Its low weight assures a fatigue-free effort.

### **Highly durable**

The robust construction assures a high longevity even for 24/7 operations.

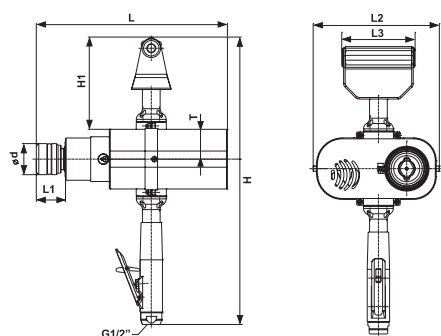


DPT 450-011BXOEX



# SPECIFICATIONS - AIR TURBINE DRILL

## Design



DPT 450-011BXOEX

Drill	Model	DPT 450-011BXOEX	
Safety Lever	Part No.	6061253A	
Max. power output	kW (hp)	4,5	(6.00)
Speed (no load/max. power)	min <sup>-1</sup> (rpm)	1100/900	
Air consumption (no load/max. power)	m <sup>3</sup> /min (cfm)	1,25/4,3	(44.14/151.83)
I.D. of air inlet hose	mm (in)	19	(.75)
Max. Drill-ø	mm (in)	42	(1.65)
Measured and certified emission-level for acoustic-pressure A, LpAeq,T	dB(A)/20μPa	88,6 (K=3)	
Measured and certified emission-level for acoustic-power A, Lwa	dB(A)/1pW	99,6 (L=3)	
Certified acceleration-value of the vibration being transferred to hand-arm	m/s <sup>2</sup>	3,79 (K=0,87)	
Weight	kg (lbs)	8,7	(19.17)
Length L	mm (in)	308	(12.13)
Length L1	mm (in)	47	(1.85)
Height H	mm (in)	414	(16.30)
Height H1	mm (in)	148	(5.83)
Distance from spindle center to outside of housing T	mm (in)	48	(1.89)
Diameter ød	mm (in)	50	(1.97)
Air connection		G1/2"	

Specifications at 90 psi (6,3 bar)

Standard Equipment:	Part Number
Hose nozzle, turnable	6021323A

Optional Accessories:	Part Number
External filter Sw 19/G3/4" 20 mic *)	6022055A

\*) To increase the lifespan of the drill, we recommend equipping the drill with an external filter.

**DEPRAG**  
machines unlimited

