



Screwdriving technology

Automation

Air motors

Air tools

DEPRAG



**NOVELTY
NOW WITH PATENT**

Basic-Line

Standard Air-Vane Motors

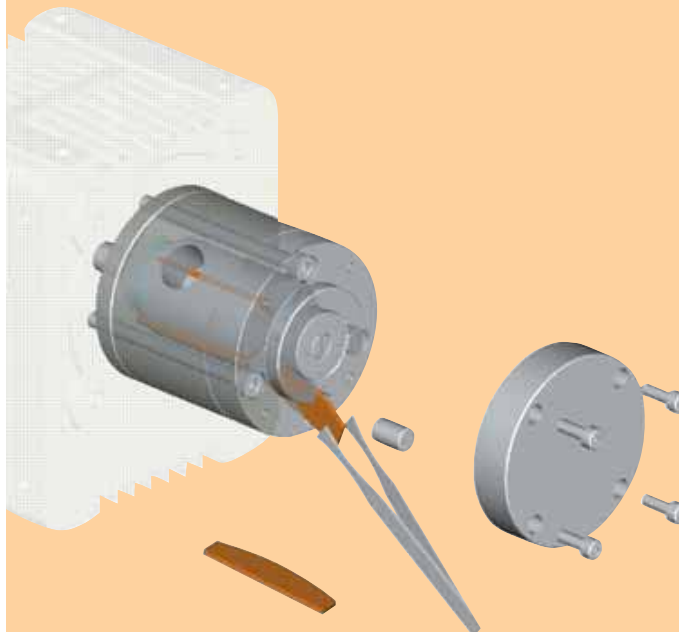
The new Basic Line air motor series includes 3 classes as per their power of 200 W, 400 W and 600 W. For each of these classes eight planetary gears are available. All gear steps are equipped with high-quality planetary wheels on roller bearings and assure best lifetime even under maximum load. A very attractive price-value ratio is achieved with their modular construction. Additionally these motors offer advantages such as small space requirement, high wear resistance, simple adjustment, full loading capacity to stall-out, etc.

What's more: a world novelty to your advantage:

on this new type of motors the rotor vanes can be exchanged by simply using a screwdriver and a pair of tweezers without disassembling the motor (no specially skilled staff necessary). Thus service requirement will be considerably reduced against other presently known motors.



For the first time exchange of vanes possible without disassembling the motor!



Technical Data

| Flange motor | | Motor size 1 | Motor size 3 | Motor size 5 |
|----------------------------|---------------------------|----------------------------------|----------------------------------|----------------------------------|
| without Gearing reversible | Type order no. | 63-001F01 445711 A | 63-001F03 445713 A | 63-001F05 445715 A |
| Nominal-Power | W / HP | 200 / 0.27 | 400 / 0.54 | 600 / 0.8 |
| Nominal-Speed | rpm | 5000 | 5000 | 5000 |
| Speed (idling) | rpm | 10000 | 10000 | 10000 |
| Nominal Torque | Nm / in.lbs | 0.38 / 3.4 | 0.76 / 6.7 | 1.1 / 9.7 |
| Start-Torque min. | Nm / in.lbs | 0.57 / 5 | 1.1 / 9.7 | 1.7 / 15 |
| Permissible radial force | max. N / lbs | 60 / 13.4 | 108 / 24.2 | 144 / 32.3 |
| Permissible axial force | max. N / lbs | 0 / 0 | 0 / 0 | 0 / 0 |
| Air Consumption | m ³ /min / cfm | 0.3 / 10 | 0.6 / 21 | 0.9 / 32 |
| Weight | kg / lbs | 1 / 2.2 | 1.4 / 3.1 | 1.6 / 3.5 |
| Hose I.D. | mm / in. | 10 / ³ / ₈ | 12 / ¹ / ₂ | 13 / ¹ / ₂ |

| Motor size 1 | | Flange motor | | | | | | | |
|-----------------------------------|---------------------------|----------------------------------|----------------------------------|----------------------------------|----------------------------------|----------------------------------|----------------------------------|----------------------------------|----------------------------------|
| with Planetary Gearing reversible | Type order no. | 63-004F01 445711 B | 63-007F01 445711 C | 63-018F01 445711 D | 63-029F01 445711 E | 63-046F01 445711 F | 63-078F01 445711 G | 63-124F01 445711 H | 63-308F01 445711 I |
| Nominal-Power | W / HP | 200 / 0.27 | 200 / 0.27 | 200 / 0.27 | 200 / 0.27 | 200 / 0.27 | 200 / 0.27 | 200 / 0.27 | 200 / 0.27 |
| Nominal-Speed | rpm | 1150 | 730 | 270 | 170 | 105 | 60 | 40 | 16 |
| Speed (idling) | rpm | 2300 | 1460 | 540 | 340 | 210 | 120 | 80 | 32 |
| Nominal-Torque | Nm / in.lbs | 1.6 / 14 | 2.6 / 23 | 7 / 62 | 11.2 / 99 | 18.2 / 161 | 31.8 / 281 | 47.8 / 423 | 80 / 708*) |
| Start-Torque min. | Nm / in.lbs | 2.4 / 21 | 3.9 / 34 | 10.5 / 93 | 16.8 / 149 | 27.3 / 242 | 47.7 / 422 | 71.7 / 634 | 80 / 708* |
| Permissible radial force | max. N / lbs | 240 / 53.8 | 240 / 53.8 | 360 / 80.6 | 360 / 80.6 | 360 / 80.6 | 520 / 116.5 | 520 / 116.5 | 520 / 116.5 |
| Permissible axial force | max. N / lbs | 50 / 11.2 | 50 / 11.2 | 70 / 15.7 | 70 / 15.7 | 70 / 15.7 | 120 / 26.9 | 120 / 26.9 | 120 / 26.9 |
| Air Consumption | m ³ /min / cfm | 0.3 / 10 | 0.3 / 10 | 0.3 / 10 | 0.3 / 10 | 0.3 / 10 | 0.3 / 10 | 0.3 / 10 | 0.3 / 10 |
| Weight | kg / lbs | 2.4 / 5.3 | 2.4 / 5.3 | 2.8 / 6.2 | 2.8 / 6.2 | 2.8 / 6.2 | 3.2 / 7 | 3.2 / 7 | 3.2 / 7 |
| Hose I.D. | mm / in. | 10 / ³ / ₈ | 10 / ³ / ₈ | 10 / ³ / ₈ | 10 / ³ / ₈ | 10 / ³ / ₈ | 10 / ³ / ₈ | 10 / ³ / ₈ | 10 / ³ / ₈ |

| Motor size 3 | | Flange motor | | | | | | | |
|-----------------------------------|---------------------------|----------------------------------|----------------------------------|----------------------------------|----------------------------------|----------------------------------|----------------------------------|----------------------------------|----------------------------------|
| with Planetary Gearing reversible | Type order no. | 63-004F03 445713 B | 63-007F03 445713 C | 63-018F03 445713 D | 63-029F03 445713 E | 63-046F03 445713 F | 63-078F03 445713 G | 63-124F03 445713 H | 63-308F03 445713 I |
| Nominal-Power | W / HP | 400 / 0.54 | 400 / 0.54 | 400 / 0.54 | 400 / 0.54 | 400 / 0.54 | 400 / 0.54 | 400 / 0.54 | 400 / 0.54 |
| Nominal-Speed | rpm | 1150 | 730 | 270 | 170 | 105 | 60 | 40 | 16 |
| Speed (idling) | rpm | 2300 | 1460 | 540 | 340 | 210 | 120 | 80 | 32 |
| Nominal Torque | Nm / in.lbs | 3.2 / 28 | 5.2 / 46 | 14 / 124 | 22.4 / 198 | 36.4 / 322 | 63.6 / 563 | 80 / 708*) | 80 / 708*) |
| Start-Torque min. | Nm / in.lbs | 4.8 / 42 | 7.8 / 69 | 21 / 186 | 33.6 / 297 | 54.6 / 483 | 80 / 708*) | 80 / 708*) | 80 / 708*) |
| Permissible radial force | max. N / lbs | 240 / 53.8 | 240 / 53.8 | 360 / 80.6 | 360 / 80.6 | 360 / 80.6 | 520 / 116.5 | 520 / 116.5 | 520 / 116.5 |
| Permissible axial force | max. N / lbs | 50 / 11.2 | 50 / 11.2 | 70 / 15.7 | 70 / 15.7 | 70 / 15.7 | 120 / 26.9 | 120 / 26.9 | 120 / 26.9 |
| Air Consumption | m ³ /min / cfm | 0.6 / 21 | 0.6 / 21 | 0.6 / 21 | 0.6 / 21 | 0.6 / 21 | 0.6 / 21 | 0.6 / 21 | 0.6 / 21 |
| Weight | kg / lbs | 2.8 / 6.2 | 2.8 / 6.2 | 3.2 / 7 | 3.2 / 7 | 3.2 / 7 | 3.6 / 7.9 | 3.6 / 7.9 | 3.6 / 7.9 |
| Hose I.D. | mm / in. | 12 / ¹ / ₂ | 12 / ¹ / ₂ | 12 / ¹ / ₂ | 12 / ¹ / ₂ | 12 / ¹ / ₂ | 12 / ¹ / ₂ | 12 / ¹ / ₂ | 12 / ¹ / ₂ |

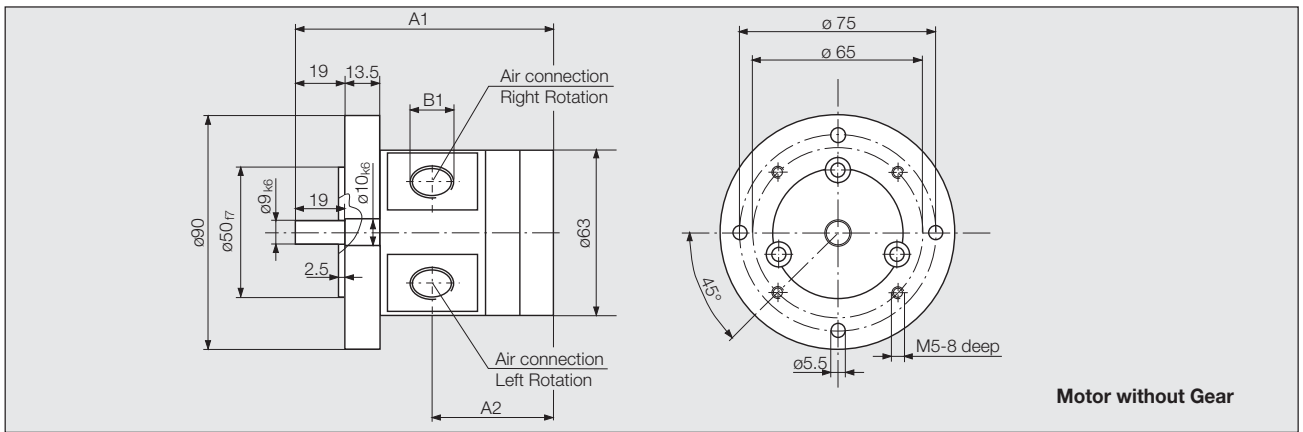
| Motor size 5 | | Flange motor | | | | | | | |
|-----------------------------------|---------------------------|----------------------------------|----------------------------------|----------------------------------|----------------------------------|----------------------------------|----------------------------------|----------------------------------|----------------------------------|
| with Planetary Gearing reversible | Type order no. | 63-004F05 445715 B | 63-007F05 445715 C | 63-018F05 445715 D | 63-029F05 445715 E | 63-046F05 445715 F | 63-078F05 445715 G | 63-124F05 445715 H | 63-308F05 445715 I |
| Nominal-Power | W / HP | 600 / 0.8 | 600 / 0.8 | 600 / 0.8 | 600 / 0.8 | 600 / 0.8 | 600 / 0.8 | 600 / 0.8 | 600 / 0.8 |
| Nominal-Speed | rpm | 1150 | 730 | 270 | 170 | 105 | 60 | 40 | 16 |
| Speed (idling) | rpm | 2300 | 1460 | 540 | 340 | 210 | 120 | 80 | 32 |
| Nominal Torque | Nm / in.lbs | 5 / 44 | 7.8 / 69 | 21 / 186 | 33.6 / 297 | 54.5 / 482 | 80 / 708*) | 80 / 708*) | 80 / 708*) |
| Start-Torque min. | Nm / in.lbs | 7.5 / 66 | 11.7 / 103 | 31.5 / 279 | 50.4 / 446 | 80 / 708*) | 80 / 708*) | 80 / 708*) | 80 / 708*) |
| Permissible radial force | max. N / lbs | 240 / 53.8 | 240 / 53.8 | 360 / 80.6 | 360 / 80.6 | 360 / 80.6 | 520 / 116.5 | 520 / 116.5 | 520 / 116.5 |
| Permissible axial force | max. N / lbs | 50 / 11.2 | 50 / 11.2 | 70 / 15.7 | 70 / 15.7 | 70 / 15.7 | 120 / 26.9 | 120 / 26.9 | 120 / 26.9 |
| Air Consumption | m ³ /min / cfm | 0.9 / 32 | 0.9 / 32 | 0.9 / 32 | 0.9 / 32 | 0.9 / 32 | 0.9 / 32 | 0.9 / 32 | 0.9 / 32 |
| Weight | kg / lbs | 3 / 6.6 | 3 / 6.6 | 3.4 / 7.5 | 3.4 / 7.5 | 3.4 / 7.5 | 3.8 / 8.4 | 3.8 / 8.4 | 3.8 / 8.4 |
| Hose I.D. | mm / in. | 13 / ¹ / ₂ | 13 / ¹ / ₂ | 13 / ¹ / ₂ | 13 / ¹ / ₂ | 13 / ¹ / ₂ | 13 / ¹ / ₂ | 13 / ¹ / ₂ | 13 / ¹ / ₂ |

Performance data relate to an air pressure of 6 bar (85 PSI)

*) max. admissible Torque

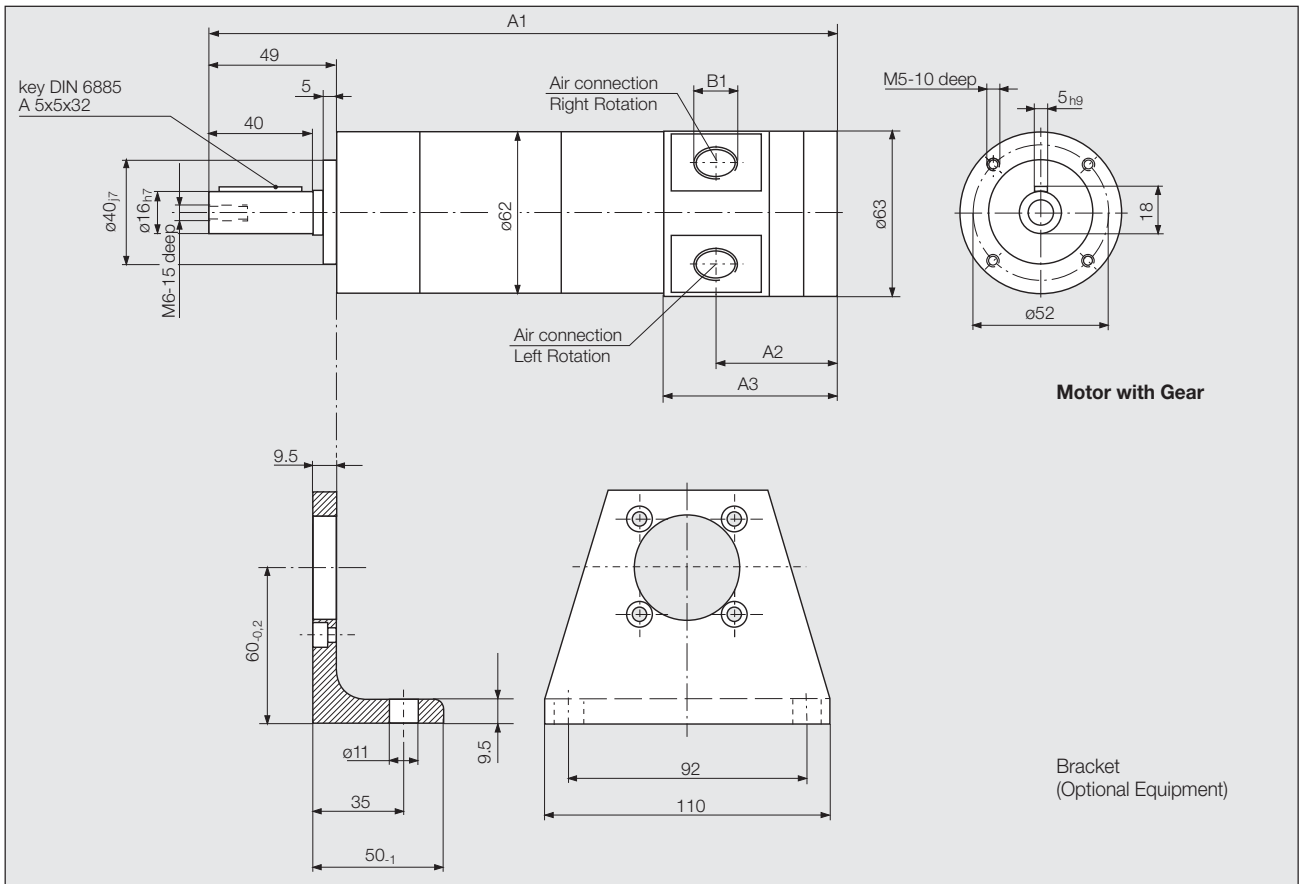
| Optional Equipment | | Motor size 1 | Motor size 3 | Motor size 5 |
|-----------------------------|-----------|--------------|--------------|--------------|
| Bracket | order no. | 445998 | 445998 | 445998 |
| necessary 4 cylinder-screws | order no. | 800465 | 800465 | 800465 |
| Silencer | order no. | 802675 | 802671 | 802671 |

For more accessories such as maintenance unit, lubricator, connecting components, please see catalog D 3340 E.



Motor without Gear

| Motor size | Type | Dimensions of Flangemotor (mm) | | |
|------------|-----------|--------------------------------|------|-----|
| | | A1 | A2 | B1 |
| 1 | 63-001F01 | 79.5 | 36.5 | 1/8 |
| 3 | 63-001F03 | 99.5 | 46.5 | 3/8 |
| 5 | 63-001F05 | 114.5 | 54 | 3/8 |



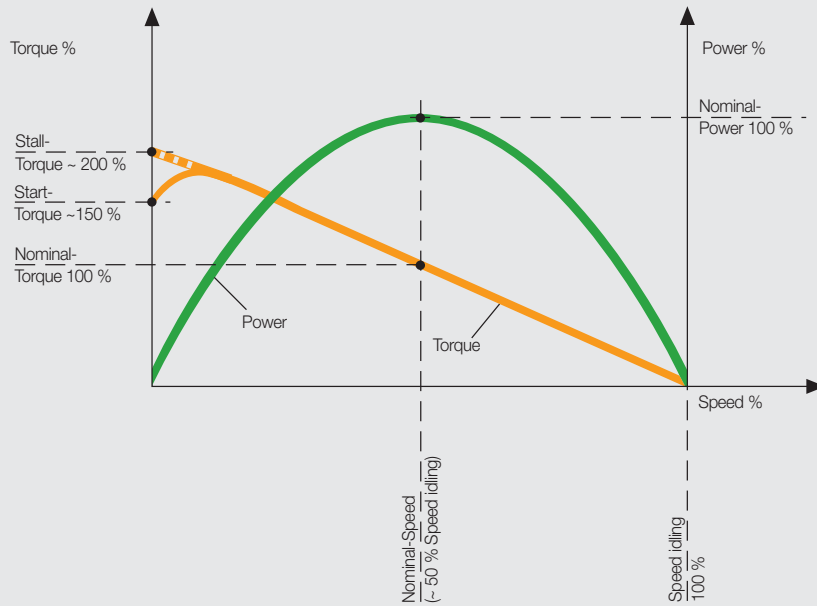
Motor with Gear

**Bracket
(Optional Equipment)**

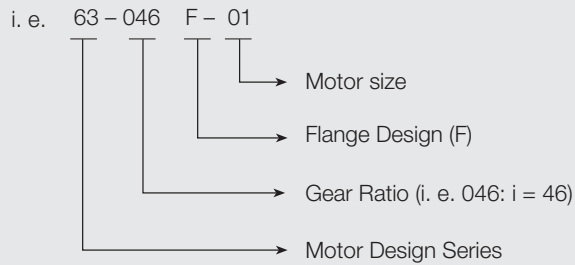
| Motor size | Type | | | Dimensions of Motor (mm) | | | |
|------------|-----------|-----------|-----------|--------------------------|------|-----|-----|
| | | | | A1 | A2 | A3 | B1 |
| 1 | 63-004F01 | 63-007F01 | | 192 | 39 | 88 | 1/8 |
| | 63-018F01 | 63-029F01 | 63-046F01 | 208 | 39 | 88 | 1/8 |
| | 63-078F01 | 63-124F01 | 63-308F01 | 224 | 39 | 88 | 1/8 |
| 3 | 63-004F03 | 63-007F03 | | 212 | 49 | 107 | 3/8 |
| | 63-018F03 | 63-029F03 | 63-046F03 | 227 | 49 | 107 | 3/8 |
| | 63-078F03 | 63-124F03 | 63-308F03 | 244 | 49 | 107 | 3/8 |
| 5 | 63-004F05 | 63-007F05 | | 227 | 56.5 | 122 | 3/8 |
| | 63-018F05 | 63-029F05 | 63-046F05 | 243 | 56.5 | 122 | 3/8 |
| | 63-078F05 | 63-124F05 | 63-308F05 | 259 | 56.5 | 122 | 3/8 |

Air-Vane Motor

power- and torque characteristics



Model Number Description (when ordering please indicate model designation)



DEPRAG

DEPRAG SCHULZ GMBH u. CO.

P.O. Box 1352, D-92203 Amberg, Germany
 Kurfürstenring 12-18, D-92224 Amberg
 Phone (096 21) 371-0, Fax (096 21) 371-120
 www.deprag.com
 info@deprag.de



CERTIFIED AS PER DIN EN ISO 9001