

AST10

-

**Sequence Controller with
integrated Power Supply**

OPERATION

-1-

Connection of a Screwdriver

The Screwdriver exchange, as well as the connection or disconnection of a screwdriver is only allowed when the controller is OFF.

The controller automatically recognizes the type of the connected screwdriver; additional data must not be input.

Screwdriving programs are already setup and it is compared if any of these screwdriving programs were created for the connected Screwdriver model. If this is not the case, then the existing programs are invalidated and a new program must be created over the Web-Interface.

Operation of the Web-Interface

The Web-Interface runs on any customary PC or Notebook, which is equipped with a network-card or WLAN-card.

The Web-Interface can be used with any current operating system, such as Windows, Linux, OS X..., and it works with all currently available browsers. So far, we have successfully tested Firefox, MS Internet Explorer, Konqueror and Opera.

The computer, on which the interface runs, can either be connected directly with the controller, or through a common network. When connected directly, any cable may be used, since the controller automatically recognizes the type of connected cable.

In order to accurately use the Web-Interface, both the controller as well as the browser must be setup to allow that a TCP/IP-connection can be established between the two and that the data exchange is released. Especially both the controller as well as the computer requires a separate IP-address and not an automatically selected IP-address (DHCP must be deactivated). Both IP-addresses must be positioned in the same network-segment.

Controller Setup

The correct IP-address must be input into the controller. Generally, the administrator of the local network sets an IP-address.

The following IP-address is in the controller at delivery (factory preset):

IP-address: 10.10.25.100

Network-mask: 255.255.0.0

The IP-address may be changed using the menu item: Setup->Additional Parameter->Ethernet Port. To change of the IP-address

- 1.activate the left functional key "Change?"
- 2.input the four address segments of the IP-address one at a time and confirm the input with the Enter-key.
- 3.input the four address segments of the network-mask one at a time and confirm the input with the Enter-key.
- 4.save the inputs using the right function-key.

Thereafter, the system automatically reboots and the text "AST10 reboot system" appears on the display.

Laptops and Browser Setup

The Browser must have free access on the controller, which means

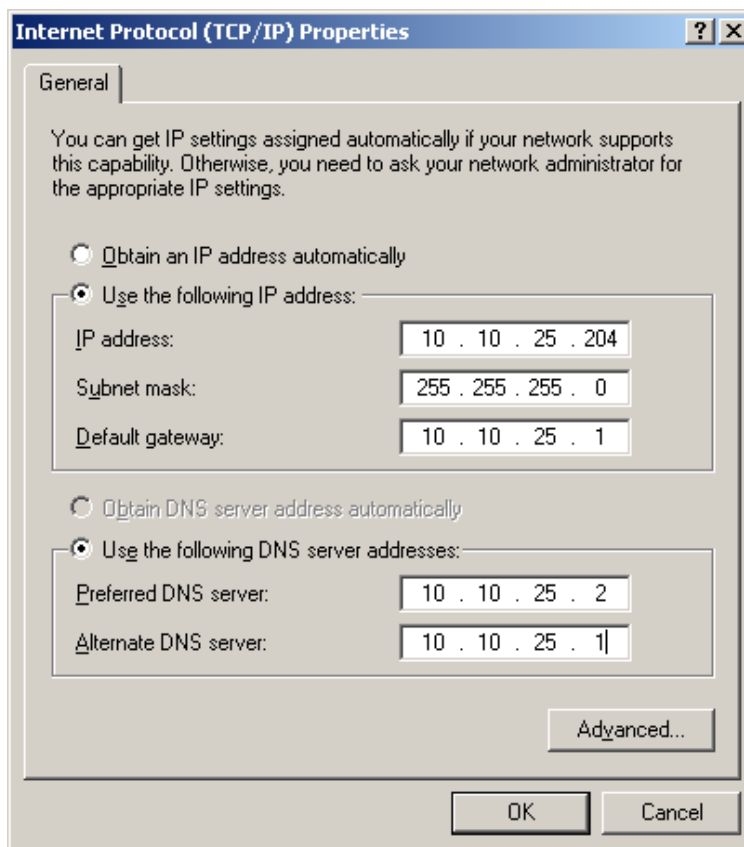
- the IP-Address of the controller must be attainable.
- the HTTP-protocol may not be deactivated
- a possible Proxy for the IP-address of the controller (or local addresses generally) must be deactivated.

Furthermore, the Browser must be able to accept Cookies of the controller and Javascript has to be activated.

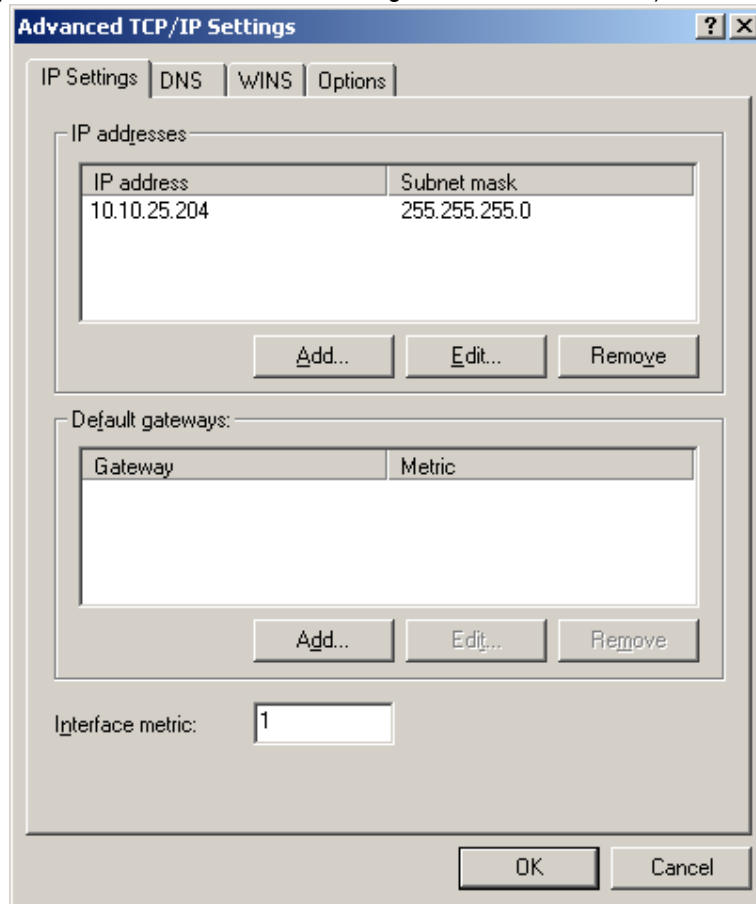
Here is a descriptive example of the adjustments for the Internet Explorer under Windows (Internet Explorer 6.x on Windows 2000). The addresses in the example-pictures are only valid for the computer used with this example and where the pictures were copied from. The IP-address for an actual situation, must be set by the respective network administrator.

Input the IP-Address

- 1.Open the Control Panel.
- 2.Open the "Network Connections"
- 3.Click „LAN-Connection“ or establish a new connection
- 4.Select the item „Internet protocol (TCP/IP) and click on the button Properties
- 5.Activate the selection item: "Use the following IP-Address" and input the IP-address, network mask and the other data, which is required for your network

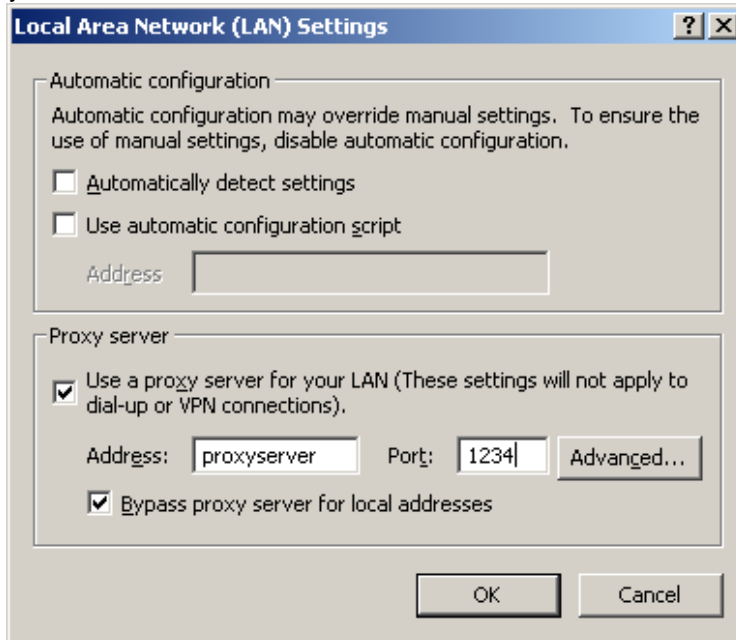


6.If needed, click on the Button “Additional” to input an additional IP-address. (for example if the net access of the computer is in a different net or net segment as the controller).

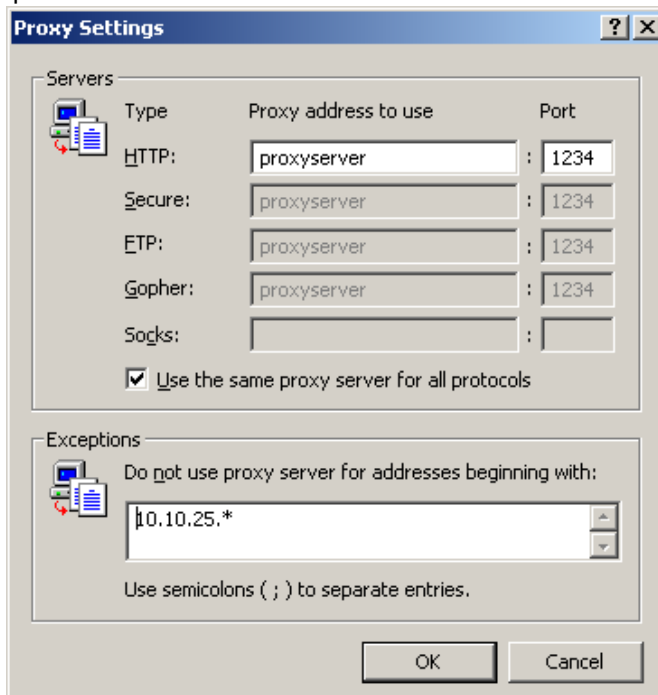


Browser-Adjustment for the Proxy Server

1. Double click the Menu item ->Internet Options->Connections
2. Click on the Button LAN-Settings
3. If the Option: "Use a Proxy Server for your LAN" is marked, then also activate the item: "Bypass proxy server for local addresses", or



4. click on the button "Advanced" and add the address of the controller into the listing of the exception.



Additional Browser Adjustments

1. If the system is adjusted to NOT allow Cookies, then select Control Panel -> Internet Options -> Privacy->Advanced Privacy Settings->Per Site Privacy Action and click the "allow" button.