

# DEPRAG

## Operating Instruction Booklet

### Pneumatic Grinding Machine

200-70DA

314855 B

Dear Customer:

This tool is the result of more than 70 years of experience in the design and manufacturing of pneumatic tools for the industrial market.

We kindly ask that you read these operating instructions carefully so that you will be able to use this tool safely and for many years to come.

If you need additional information, please contact your DEPRAG Representative, one of our international support offices or us direct at DEPRAG. We will be happy to answer any questions. Please visit our web site: [www.deprag.com](http://www.deprag.com)

## Content

1	SAFETY TIPS .....	3
1.1.	General Safety Tips .....	3
1.2.	Safety Tips for Grinders .....	4
1.3.	Owner Obligation .....	8
1.4.	Operator Obligation .....	8
1.5.	Warranty and Liability .....	9
1.6.	Symbol Description .....	10
1.7.	Observe Environmental Regulations .....	12
2	DESIGNATED EQUIPMENT USE .....	12
3	INSTALLATION .....	13
4	OPERATION .....	14
5	HANDLING .....	14
6	ASSEMBLY - DISASSEMBLY .....	15
6.1.	Spare Parts List .....	16
7	MAINTENANCE AND UPKEEP .....	17
7.1.	Wear Parts .....	17
8	TROUBLE SHOOTING .....	18
9	DELIVERY CAPACITY .....	19
10	ACCESSORIES - OPTIONAL EQUIPMENT .....	19
11	STORAGE .....	19
12	TECHNICAL DATA .....	20
13	DISPOSAL .....	20
14	CONFORMITY DECLARATION .....	21
15	SERVICE LOCATIONS AND AUTHORIZED PARTNERS .....	22

## 1 Safety Tips

### 1.1. General Safety Tips



**Before operating tool make sure to carefully read and observe this operating instruction.**

Generally, the operator of the equipment and/or machinery is responsible for the equipment's perfect condition and operation, while observing all necessary safety regulations. The equipment and/or machinery has been constructed in accordance with the newest level of technology while recognizing all necessary safety-related requirements. Nevertheless, while operating the equipment and/or machinery there is a risk of bodily harm to the operator as well as damage to equipment and/or machinery and other property.

Operate the equipment and/or machinery only if equipment/machinery

- Is used for the task it was designed for
- is in perfect working condition and safe to use.

It is important to observe the technical data of the equipment, especially in regards to the environmental temperatures. The designated area of use for this equipment is clearly described in chapter *Designated Equipment Use* and those requirements have to be observed as well. Prerequisite for the safe conduct and the uninterrupted operation of the equipment, is the knowledge of the basic safety tips and the safety regulations. Additionally, all current regulations for a safe operational area, for accident-prevention guidelines of electrical and mechanical installations, as well as noise suppression demands must be observed. During any maintenance or repair work, a clean work surface is recommended. Also, it is not recommended to either eat or smoke during repair or maintenance. Arbitrary changes made to the equipment, which alters its designated use, voids the warranty and cancels the manufacturers liability.

- The tool is not insulated to protect against an electrical power surge.
- It is not recommended to use this tool in explosive hazardous environments, unless it was specifically designed for such a use.
- During the disconnection or reconnection of the tool from the compressed air, an injury is possible because of a whipping pressure-hose.

The operating instruction booklet, especially the safety symbols and safety tips attached to the equipment or included in the documentation, must be observed at all times by all persons getting into contact with the equipment.

## 1.2. Safety Tips for Grinders



- Use only approved grinding inserts with a correct shaft diameter.
- Make sure the rated speed of the insert is higher than the speed of the grinding resp. milling machine.
- Never use a grinding resp. milling machine that is not in good working order or one with defective parts.
- The grinding inserts (wheels/disks) must be handled and stored with care and in accordance with manufacturers instructions.
- Check the grinding inserts (wheels/disks) for damages prior to the use in grinding resp. milling machines. Never use damaged grinding inserts (wheels/disks). Only use the grinding inserts (wheels/disks) in accordance with the manufacturers' instructions.
- In case of a power interruption, the machine must be disconnected from the air supply.
- When connecting/disconnecting the grinding resp. milling machine to/from the air supply - please pay careful attention NOT to actuate the start lever while doing so.
- Disconnect machine from air supply prior to changing grinding inserts.
- Never remove guards from machines where fitted and ensure they are in good condition and properly adjusted before starting the machine.
- Guards where provided should be adjusted to deflect sparks and debris away from the operator.
- Strong vibrations may occur because of loose or damaged grinding inserts.
- Do not use cut-off wheels (when using machines with a collet).
- Do not exceed the maximum allowable operating speed. Check the maximum operating speed regularly.
- Check the grinding inserts (wheels/disks) for correct and tight clamping, prior to start-up of operation. Test the grinding resp. milling machine without load in a safe position and environment for a trial period of some 30 sec. When feeling considerable vibrations or in any other case of irregular behaviour or operation switch off the machine immediately. Analyze and eliminate all causes of irregular behaviour and vibration prior to new start-up.
- When working with specific materials, dust and abrasion as well as steam outs can be created which could result in an explosive endangered environment.

- Make sure to sufficiently fasten the work piece(s) prior to grinding/milling.
- Do not use the machine close to inflammable liquids or gas.
- Do provide devices for cleaning the air at the working place, in case explosive dust, steam or aerosols dangerous to your health may occur.
- After turning-off the grinding resp. milling machine, the tool will continue to rotate (inertia). Lay aside the grinding resp. milling machine in a safe way and position. Do not apply pressure to its surface.

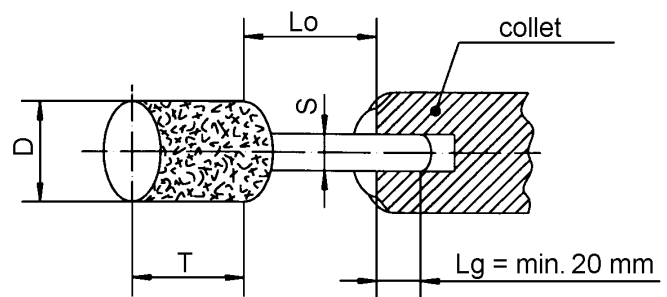


- Always wear eye protection (EN 166 Grade B) and hearing protection (EN 352). It is also recommended to wear gloves (EN 388 Category 2) and safety clothing.
- Dependent on the materials to be processed, personal safety equipment must be used and a dust removal system should be installed.
- Do not wear wide clothing or jewelry, for they can be seized by movable parts. Wear a hairnet if operator has long hair.
- Do take due note of special markings, limitations or any other explicit instructions of use at the grinding insert or the grinding resp. milling machine.
- Ensure that the correct abrasive product is selected. An unsuitable product can produce excessive debris, dust, vibration and noise.
- Use only abrasive products conforming to the highest standards of safety. These products will bear the relevant EN standard number and/or the inscription „oSa“.
- Do not exceed the maximum allowable air pressure. A pressure regulator has to be installed, which regulated the air pressure before reaching the tool.
- Store abrasives in dry, frost-free conditions avoiding wide variations in temperature. Ensure they are properly protected and supported to prevent damage and distortion.
- Coated abrasives should be stored at 18-22°C, 45-65% relative humidity.
- Abrasive belts should be hung on a rod or peg not less than 50 mm diameter.
- Never use an abrasive product beyond its expiry date where marked.
- Do not modify neither grinding resp. milling machine nor inserting tool after receipt! Never force the abrasive product onto the mounting fixture.
- Check that the correct mounting devices are used and that they are undistorted, clean and free from burrs.

- Do not grind on the part of the product that is not designed for the operation. Avoid grinding with the edge of abrasive belts, use the centre of the belt if possible.
- Do not leave abrasive belts under tension when not in use.
- Avoid clogging and uneven wear to ensure that the abrasive product is working efficiently. Dress frequently where appropriate.
- Before start-up of tool make sure to visually check both the grinding resp. milling machine and the grinding inserts, whether they are okay and not damaged in any way and whether they are appropriate for the work ahead.
- Use grinding resp. milling machine only with a maintenance unit, consisting of Filter with condensation reservoir, regulator and oiler (appx. 1-2 drops pro m<sup>3</sup>). When operating with oilfree air, a performance reduction of up to 20% occurs and maintenance requirements increases! The pressure must not drop below 7 bar/100 PSI.
- Expert users trained by authorized, responsible technical personnel only must be allowed to work with the grinding resp. milling machine.
- Do wear a respirator (EN 149), if using the grinding resp. milling machine for dust-producing jobs. Exposure to dust generated from workpiece and/or abrasive materials can result in lung damage and/or other physical injury.
- Disassembly resp. assembly of this DEPRAG grinding resp. milling machine must be done either by DEPRAG or other authorized trained personnel only.
- There is a risk of getting hurt by a whip-lashing air hose - please pay careful attention.
- Use the DEPRAG recommended lubrication oil only.
- Action needs to be taken if tingling, pins and needles or numbness is experienced after 10 minutes continuous use of the abrasive product. Avoid continuous use of the abrasive product.
- The effects of vibration are more pronounced in cold conditions so keep the hands warm and exercise hands and fingers regularly.
- Maintain mounting flanges and back-up pads in good condition and replace if worn or distorted.
- Do not grip the workpiece or machine too tightly and do not exert excessive pressure on the abrasive product.
- Used or defective abrasives should be disposed in accordance with local or national regulations.
- Be aware that the abrasive product may be contaminated with material from the workpiece or process after use.

- Disposed abrasive products should be damaged to prevent them from being taken from waste skips and re-used.
- Use mounting blotters where supplied.
- Do not tighten the mounting device excessively.
- Never remove guards from machines where fitted and ensure they are in good condition and properly adjusted.
- Never start the machine with the workpiece in contact with the abrasive product.
- Never apply excessive force or shock to the abrasive product or let it overheat.
- It is especially important to keep in mind, that the allowable speed of the installed grinding insert is reduced, if the distance between the end of the collet and the bottom of the insert (overhang "Lo") is increased. A minimum shaft insertion length "Lg" has to be guaranteed.

Lo = overhang  
S = shaft diameter  
D = insert diameter  
T = insert length  
Lg = shaft insertion length



- The shaft diameter of the insert and collet capacity has to be the same.

## 1.3. Owner Obligation

The owner is obliged to only let persons operate the equipment, who

- are familiar with basic work environment safety rules and accident-preventing regulations. Also, those persons must have been instructed in the correct use of the equipment.
- have read and understood all safety and warning notifications in the Operating Instruction Booklet, as well as all other documentation pertaining to this equipment.
- check and confirm at regular intervals, that a safety oriented operation is guaranteed.

Only qualified and authorized personnel is allowed to operate, maintain and repair this equipment. A malfunction, which impairs operator safety, must be immediately removed.

## 1.4. Operator Obligation

Personnel, who is engaged in the operation of the equipment, must always be committed to

- observe the basic safety and accident preventing regulations,
- read and observe the safety and warning notifications of this operating instruction booklet.

## 1.5. Warranty and Liability

Unless otherwise specified, our “General Sales and Delivery Conditions” apply. Warranty and liability claims in regards to persons or equipment damages are invalid, if one or several of the following causes apply:

- Use of the equipment in a non-designated application.
- Improper installation, operation, service or maintenance of the machine.
- Operation of the machine with either defective or removed safety and protection devices.
- Non-observance of the requirements stated in the operating instruction booklet, in regards to transportation, storage, mounting, installation, operation, maintenance and service of the equipment.
- Structural change or adjustment on the equipment to a non-designated use.
- Inadequate supervision of wear parts.
- Improper repair, inspection or maintenance.
- Catastrophic cases because of a war, acts of god or other reasons which are beyond our control.

## 1.6. Symbol Description



Read and observe the Operating Instruction Booklet, prior to and during operation of tool.



### **DANGER**

Reference to an immediate danger to a person. May lead to serious injuries or even death, if unobserved!



Waste Oil

Properly recycle environmentally damaging grease, cooling agents or detergents.



### **RECOMMENDATIONS**

Important or additional information on the equipment or in the documentation.



Use eye protection or wear safety goggles.



Wear hearing protection.



Warning against hand-injuries.

Attention: Keep away your hands from areas, which are marked with this symbol!



Hands may be crushed, seized or otherwise injured.



ESD-protected area

Equipment may be damaged or destroyed by an electrostatic discharge.

Maintenance and repair on hydraulic and pneumatic equipment may only be performed by specially trained personnel!



Disconnect equipment from air supply, prior to repair of pneumatic or hydraulic equipment.

Provide regular preventive maintenance on hoses and airlines. Exchange hose lines, even if there is no visible damage! (Observe corresponding requirements of the manufacturer!)

After repair and maintenance, check the following items:

- make sure all detached and re-attached connections are solid.
- confirm that removed covers, screens or filters were re-installed
- During disconnecting or reconnecting of an air-operated equipment, injury may occur due to a whipping air-hose

After conclusion of maintenance or repair and prior to start of operation, make sure to

- remove all materials, tools and other supplies needed for the maintenance or repair from work area of the equipment
- remove leaking liquid or oils
- make sure all safety devices on the equipment work perfectly!

## 1.7. Observe Environmental Regulations



When working on or with the equipment, it is imperative to observe all requirements in regards to waste-disposal and proper recycling.

Especially during installation, repair or maintenance, water damaging agents such as

- lubricating grease and oil
- hydraulic fluid
- cooling agents
- solvent-containing cleaning agents

must not leak into the ground or into the sewage system!

Such materials must be stored, transported, contained and recycled in suitable containers.

## 2 Designated Equipment Use

This midget grinder is used preferably with grinding pins or milling inserts, mainly for the treatment of plastic and metals in foundries, in the entire mechanical engineering industry, the tool- and the appliance-industry to level, de-burr or treat cast-iron parts.

## 3 Installation

- Blow out air line and pressure hose, prior to connection it to the equipment.
- The hoses must be free of bends and kinks.
- Make sure, that all air lines have a sufficient cross-section and remove possible throttle areas.
- Connect Grinders or Polishers as follows:
  - a) for standard operation connect equipment to a maintenance unit, consisting of Filter with condensation reservoir, Regulator and Oiler. When choosing a maintenance unit, observe air consumption of the machine (see Technical Data).

Air Consumption	Thread Size	Part No.
0,05 - 0,5 m <sup>3</sup> /min	¼ "	820454 A
0,15 – 1,5 m <sup>3</sup> /min	½ "	820455 A
0,8 – 6,0 m <sup>3</sup> /min	¾ "	821608 A

- b) for the use with minimal lubrication connect to a filter-regulator consisting of Filter with condensation reservoir and pressure regulator

Air Consumption	Thread Size	Part No.
0,05 - 0,5 m <sup>3</sup> /min	¼ "	822408 A
0,15 – 0,9 m <sup>3</sup> /min	3/8 "	826981 A
0,5 – 1,5 m <sup>3</sup> /min	½ "	822409 A
0,8 – 6,0 m <sup>3</sup> /min	¾ "	826982 A

in connection with a Point-of-Use Oiler (Part No. 378077 A)

- Check air pressure at F/R/L outlet. The Regulator needs to be adjusted to an airflow of 6,3 bar (90 PSI). A higher pressure than 6,3 bar leads to increased wear and tear. Pressure below 6,3 bar leads to performance loss.

In regards to air-quality according to ISO8573-1, we recommend:

	CLASS	RESIDUE	RESIDUE OF DUST		RESIDUE OF WATER	
		OF OIL	Particle Size µm	Concentration max. mg/m <sup>3</sup>	Dew Point °C	Pressure Concentration max. g/m <sup>3</sup>
Lubricated Air	4	Content mg/m <sup>3</sup> 5	15	8	+3	6
Dry Air	3	1	5	5	-20	0,88

## 4 Operation

Prior to commissioning, be sure to insert the tool as deeply as possible into the spring chuck and fasten it using the single-ended open-jawed wrench included in the delivery.

(see the *Safety Instructions*)

### Attention



Before operating the tool, check that grinding insert is securely fastened. A loose grinding insert may cause an injury.

Use only acceptable grinding inserts. Check and make sure that the allowable speed of the grinding insert is higher than the speed of the grinder

Keep the pressure light during working. High speeds at low pressure are preferable over low speeds with high pressure. When selecting a milling cutter mould, make sure that the work piece radius of boreholes or angles is always larger than the milling cutter radius, as the milling cutter otherwise get stuck and jag. When milling in recesses and slits, the milling cutter should be moved marginally back and forth during the process.

Be sure to guide the machine in a manner ensuring that neither spring chuck nor spindle touch the workpiece to avoid unnecessary wear and tear of these parts and the ball bearings.

### How to clamp inserting tool:

- Put grinding pin into collet 314406 and clamp with the supplied spanners. (right-hand thread)

### Connection:

- Connect machine to maintenance unit.
- Open shut-off valve (operating pressure 6,3 bar/90 PSI)

### Start:

- Turn twist sleeve 829213, machine starts.

## 5 Handling

The tool should only be used while observing all safety- and danger recommendations.

Machine starts by twist valve.

## 6 Assembly - Disassembly

**Disassembly:** (see Spare Parts Drawing)



**Prior to disassembly, disconnect equipment from air supply ! Only experienced maintenance personnel may assemble or disassemble this equipment.**

After repair or maintenance, verify that equipment runs to specification!

Principally, use only DEPRAG original spare parts. Otherwise, a reduction in equipment power-output and an increased maintenance-requirement occurs. If NON-DEPRAG parts are installed, DEPRAG is justified to void any existing warranty and liability obligations.

1. Disconnect machine from air supply.
2. Loosen threaded fitting 829230 (left-hand thread).
3. Unscrew twist valve with air inlet.
4. Slide out spindle- and motor parts complete.

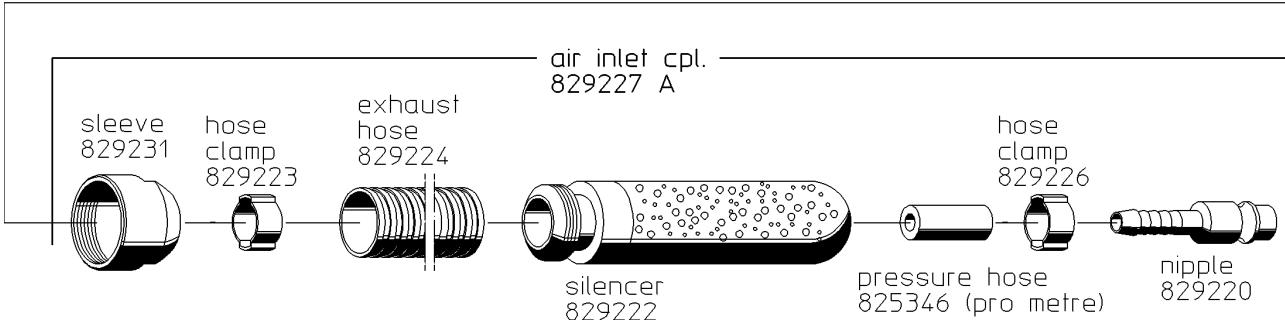
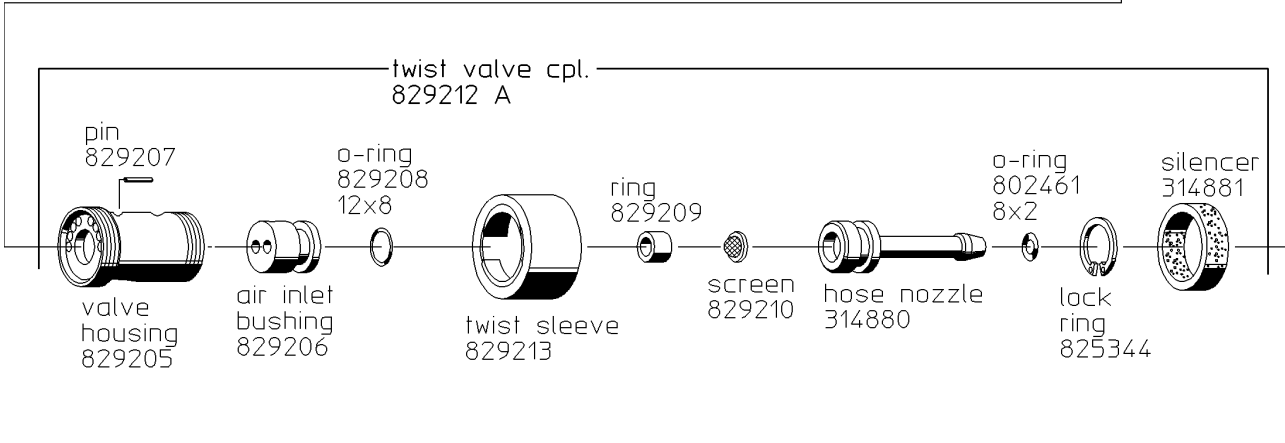
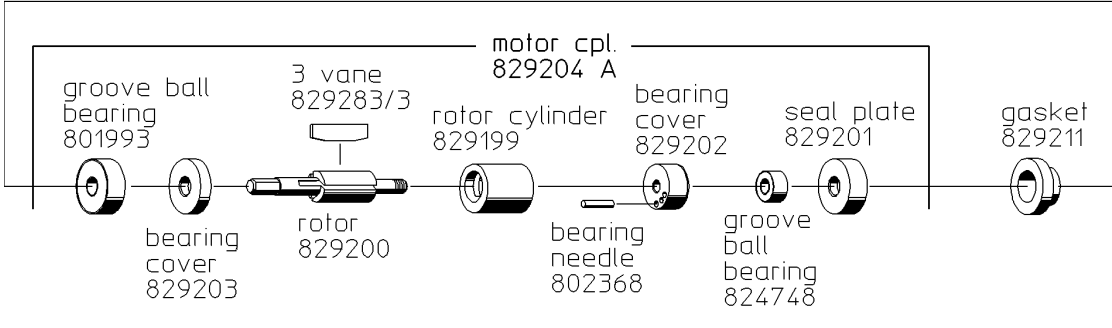
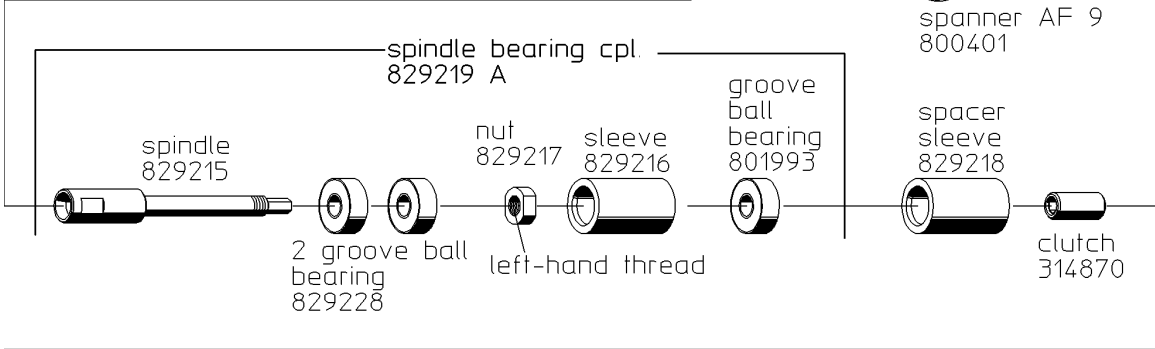
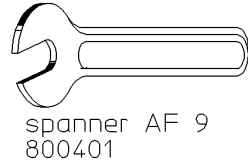
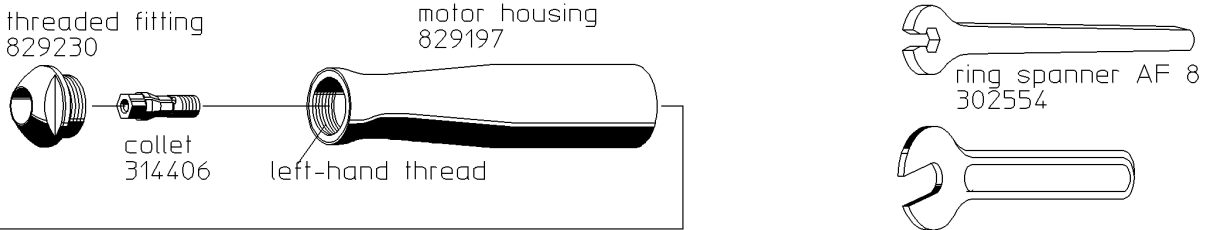
### **Assembly:**

1. Exchange damaged parts.
2. Mount spindle- and motor parts in correct order into the spindle bearing.
3. Assemble twist valve with air inlet.
4. Tighten threaded fitting 829230 carefully (left-hand thread).



**Attention:**  
**Check grinder for a smooth run and verify the speed of the grinder.**

## 6.1. Spare Parts List



## 7 Maintenance and Upkeep

Operator can perform inspection and maintenance. Only specialized personnel may perform assembly or disassembly of this equipment. Faulty assembly may lead to danger for the operator and to permanent damage of the equipment

This grinder requires little maintenance. If the following rules are observed, the tool reaches its promised high life span and remains in a safe condition to use.

- Regularly check equipment for external damage.
- Check the air filter (bleed water condensation on a regular basis) and the oil reservoir, as well as the oiler adjustment [if operated with lubricated air]. We recommend DEPRAG-Oil, Part No. 790081 E (250 cm<sup>3</sup>).
- We recommend a maintenance interval of every 1000 operating hours. Vanes have to be checked and if needed, replaced.
- After re-assembly, drip 2 – 3 drops of oil into the air inlet.
- If grinder malfunctions, we recommend to send the machine to DEPRAG.

### 7.1. Wear Parts

QUANTITY	NAME	PART No.
1	Clutch	314870
3	Vane	829283/3

## 8 Trouble Shooting

In the case of a malfunction, check and observe all instructions contained in this technical documentation. If necessary, adjust equipment as needed.

Possible fault and their causes are shown below:

<b>FAULT</b>	<b>CAUSE</b>	<b>SOLUTION</b>
Insufficient Power	Air pressure too low	Minimum air pressure should be 90 PSI for maximum performance
	Restriction in air hose	Remove bends or other restrictions
	Hose I.D. is too small	Use required hose I.D.
	Worn vanes	Exchange vanes
	Insufficient lubrication	Provide the required air-quality
Machine does not start	No air, shut-off valve is closed.	Open shut-off valve
	Worn vanes or vanes are jammed	Exchange vanes
Motor operates, but spindle does not rotate	Broken clutch	Replace clutch

If necessary, send the equipment to DEPRAG.

## 9 Delivery Capacity

Please check the delivery capacity in regards to its completeness.

QUANTITY	NAME	PART No.
1	Operating Instruction Booklet	011991EN
1	Grinding machine	314855 B
1	Spanner AF 9	800401
1	Ring spanner AF 8	302554

## 10 Accessories - Optional equipment

NAME	PART No.
Collet Ø 2 mm	314693
Collet Ø $\frac{3}{32}$ " (2,35 mm)	314694
Collet Ø $\frac{1}{8}$ " (3,175 mm)	314407

## 11 Storage

Unused machines should be stored in a dry, locked area.

## 12 Technical Data

**Manufacturer** DEPRAG SCHULZ GMBH u. CO.  
**Address** Kurfürstenring 12 - 18 Postfach 1352  
D-92224 Amberg D-92203 Amberg  
**Phone** 09621/371-0  
**Fax** 09621/371-120

### Technical Data:

<b>TYPE</b>	<b>200-70DA</b>
<b>PART No.</b>	<b>314855 B</b>
<b>Waste Air</b>	Connection side
<b>Air Intake</b>	Twist valve
<b>Grinding insert, head-Ø max. (mm/in.)</b>	5 / <sup>13</sup> / <sub>64</sub>
<b>Milling insert, head-Ø max. (mm/in.)</b>	3 / <sup>1</sup> / <sub>8</sub>
<b>Speed, unloaded (rpm)</b>	72 000
<b>Air Consumption, under load (m<sup>3</sup>/min/cfm)</b>	0,15
<b>Power (kW/HP)</b>	0,085 / 0,11
<b>Machine-Ø (mm/in.)</b>	29 / 1 <sup>9</sup> / <sub>64</sub>
<b>Machine-length, without air inlet (mm/in.)</b>	152 / 6
<b>Air Connection/Exhaust-Hose-Length (m/ft.)</b>	1,8/1 / 5,9/3,3
<b>Weight, without hoses (kg/lbs)</b>	0,23 / 0,5
<b>Noise level (dB(A))</b>	75
<b>Hose I.D. for air supply (mm/in.)</b>	LW 5 / <sup>13</sup> / <sub>64</sub>
<b>Connector</b>	Air hose
<b>Vibration (m/s<sup>2</sup>)</b>	< 2,5
<b>Air pressure (bar/PSI)</b>	6,3 / 90

## 13 Disposal

Unused machines should be stored in a dry, locked area. Disassemble the machine for the required disposal complete. Observe local and environmental regulations for the separation and recycling of materials.



**Recycle waste oil to avoid environmental contamination!**

## 14 Conformity Declaration

### EC-Conformity Declaration according to the EC-Machine-Guidelines 98/37/EC, Amendment IIA

We,

DEPRAG SCHULZ GMBH & CO.  
PO Box 1352  
D-92203 Amberg

hereby confirm, that the design of the  
grinding machine

**200-70DA**

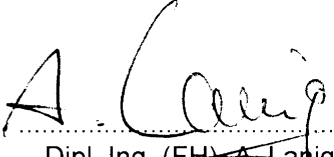
conforms to the following, relevant regulation:

- EC-Machine-Guidelines, Version 98/37/EC, Amendment No. 1 and No. 2.2.

Applicable Standard:

- EN 292
- EN 792-9

Amberg, 13.09. 2005

  
Dipl. Ing. (FH) A. Langig  
Mr. Design Dept.

## 15 Service Locations and Authorized Partners

### ARGENTINA

**ERIN s.a.**  
Av. Constituyentes 5751  
RA-1431 Buenos Aires  
Tel./Fax: +54 (0) 11 / 4573.1313

### AUSTRIA

**Amersin Olschinsky GmbH**  
Kastnerweise 1  
A-2441 Mitterndorf a.d. Fischa  
Tel.: +43 (0)1 / 8 69 87 66  
Fax: +43 (0)1 / 8 65 16 97  
Internet: <http://www.amersin.at>  
e-mail: [information@amersin.at](mailto:information@amersin.at)

### AUSTRALIA

**De Rossi Industrial Pty. Ltd.**  
Unit 1 – 2 / 600 Liverpool Road  
Strathfield South, N.S.W. 2136  
Tel.: +61 (0)2 / 8732.7200  
Fax: +61 (0)2 / 8732.7299  
e-mail: [sales@derossi.com.au](mailto:sales@derossi.com.au)

### BELGIUM

**Aijkens en Zumpolle B.V.**  
Postbus 29  
NL-5306 ZG  
Brakel/Niederlande  
Tel.: +31 (0)4 18 / 67 18 16  
Fax: +31 (0)4 18 / 67 32 17  
Internet: <http://www.zumpolle.net>  
e-mail: [info@zumpolle.net](mailto:info@zumpolle.net)

### BRAZIL

**METALFEMA Ltda.**  
Rua Saõ Pedro, 786  
Saõ Leopoldo – RS –  
BRAZIL  
ZIP 93.010-260  
Tel.: +55 (0) 51 / 592.4050  
Fax: +55 (0) 51 / 590.1856  
e-mail: [mtfma@zaz.com.br](mailto:mtfma@zaz.com.br)

### PR CHINA

**DEPRAG China**  
DEPRAG Assembly Technologies  
(Suzhou) Co.Ltd.  
No. 5, Xinghan St, Blk. A#06-16  
Suzhou 215021, P.R. China  
Tel.: +86 (0) 512 – 6767 – 1180 – 100  
Fax: +86 (0) 512 – 6767 – 1190  
Internet: [www.deprag.com.cn](http://www.deprag.com.cn)  
e-mail: [biz@deprag.com.cn](mailto:biz@deprag.com.cn)  
e-mail: [d.hua@deprag.com.cn](mailto:d.hua@deprag.com.cn)

### CROATIA

**SM AUTOMATIKA D.O.O**  
Trg i. Kukuljevica 6  
HR-10090 Zagreb  
Tel.: +385(0)13 89 41 79  
Fax: +385(0)13 87 89 78  
Internet: <http://www.sm-automatika.hr>  
e-mail: [info@sm-automatika.hr](mailto:info@sm-automatika.hr)

### CZECHIA/SLOWAKIA

**DEPRAG CZ a.s.**  
ul. T.G. Masaryka 113  
CZ -50781 Lázně Bělohrad  
Tel.: +420 (0) 4 93 / 79 24 11  
Fax: +420 (0) 4 93 / 79 25 12  
Internet: <http://www.deprag.com>  
e-mail: [info@deprag.cz](mailto:info@deprag.cz)

### DENMARK

**DEPRAG Scandinavia AB**  
Gap Sundins väg 3  
SE-63346 Eskilstuna  
Tel.: +45 (0) 98 57 22 50  
Fax: +45 (0) 98 57 22 53  
Internet: <http://www.deprag.com>  
e-mail: [keld.branner@get2net.dk](mailto:keld.branner@get2net.dk)

### ESTLAND

**Pneumacon OY**  
Läkkisepäntie 4  
FI-00620 Helsinki  
Tel.: +358 (0) 9 / 7288.160  
Fax: +358 (0) 9 / 7288.1610  
Internet: <http://www.pneumacon.fi>  
e-mail: [info@pneumacon.fi](mailto:info@pneumacon.fi)  
e-mail: [harri.lindroos@pneumacon.fi](mailto:harri.lindroos@pneumacon.fi)

### FINLAND

**Pneumacon OY**  
Läkkisepäntie 4  
FI-00620 Helsinki  
Tel.: +358 (0) 9 / 7288.160  
Fax: +358 (0) 9 / 7288.1610  
Internet: <http://www.pneumacon.fi>  
e-mail: [info@pneumacon.fi](mailto:info@pneumacon.fi)  
e-mail: [harri.lindroos@pneumacon.fi](mailto:harri.lindroos@pneumacon.fi)

### FRANCE

**DEPRAG S.A.R.L.**  
30 Z.I. du Ried  
F-67590 SCHWEIGHOUSE sur Moder  
Tel.: +33 388 / 06.14.17  
Fax: +33 388 / 93.01.08  
e-mail: [depragfrance@evc.net](mailto:depragfrance@evc.net)

### GERMANY

**Werk Amberg**  
Kurfürstenring 12-18,  
D-92224 Amberg  
Postfach 1352,  
D-92203 Amberg  
Tel.: +49 (0) 9621 / 3 71-3 71  
Fax: +49 (0) 9621 / 3 71-1 20  
Internet: <http://www.deprag.com>  
e-mail: [info@deprag.de](mailto:info@deprag.de)

### GREAT BRITAIN

**DEPRAG Limited**  
Holly Farm Business Park  
Honiley, Kenilworth  
Warwickshire CV8 1NP  
Tel.: +44 (0) 1926 485480  
Fax: +44 (0) 1926 485481  
Internet: [www.deprag.co.uk](http://www.deprag.co.uk)  
e-mail: [m.searle@deprag.co.uk](mailto:m.searle@deprag.co.uk)

### GREECE

**D. Panayotidis – J. Tsatsis s.a.**  
6 Pireos Street – Moschaton  
Athen  
Tel.: +30 (0) 1 / 4810.817-8-9  
Fax: +30 (0) 1 / 482 96 73

### HUNGARY

**ADLER '91**  
Export/Import Kereskedelmi  
Takarék u. 18/B  
H-8800 Nagykanizsa  
Tel./Fax: +36 (0) 93 / 314 633  
e-mail: [adler91adlovits@chello.hu](mailto:adler91adlovits@chello.hu)

### Nóniusz Tool Trading House Ltd.

Köbányai út. 47/6  
H-1101 Budapest  
Tel.: +36 (0) 1 / 260 030 30  
Fax: +36 (0) 1 / 260 060 83  
Internet: <http://www.noniusz.hu>  
e-mail: [noniusz@noniusz.hu](mailto:noniusz@noniusz.hu)

### INDIA

LEAPTECH Corporation  
812 Cosmos, Sector – 11  
CBD Belapur  
New Mumbai – 400 614  
Tel.: +91 / 22 / 2756.2822/2849  
Fax: +91 / 22 / 2756.2881  
Internet: [www.leaptechcorp.com](http://www.leaptechcorp.com)  
e-mail: [leaptech@vsnl.net](mailto:leaptech@vsnl.net)

### DELHI office:

C-332, Sector – 10  
Noida – 201 301  
Tel.: +91 / 120 / 253.1393  
Fax: +91 / 120 / 253.1060

### BANGALORE office:

# 53, Anchor  
Suddagundapalaya  
C.V. Raman Nagar  
Bangalore – 560 093  
e-mail: [leaptechbg@vsnl.net](mailto:leaptechbg@vsnl.net)

### IRAN

**FARA SANAT Co.**  
No. 117, Abzar & Yaragh passage  
Postcode 1136748173  
Tehran  
Tel.: +98 (0) 21 / 673.2918 / 670.6340  
Fax: +98 (0) 21 / 673.4757

### NACCARSON AIR TOOLS Co., Ltd.

Azadi Ave. No. 625  
IR-Tehran 14 588  
Tel.: +98 (0) 21 / 66006602 + 66015656  
Fax: +98 (0) 21 / 66009451

### IRELAND

**Production Equipment Ltd.**  
Riverside Commercial Estate  
IRL-Galway  
Tel.: +353 (0) 91 / 745 100  
Fax: +353 (0) 91 / 751 299  
e-mail: [sales@productionequipment.ie](mailto:sales@productionequipment.ie)

## ITALY

**DREX PALLOTTI S.r.l**  
Via A. Manzoni, 19  
I-20090 Vimodrone/Mi  
Tel.: +39 02 / 2740 0561 + 0569  
Fax: +39 02 / 2740 0607  
e-mail: [pallotti@drex.com](mailto:pallotti@drex.com)

## ATAX S.r.l.

Via Carolina Romani, 23  
I-20091 Bresso/Mi  
Tel.: 0039 02/ 61.03.48.61  
Fax: 0039 02/ 61.03.48.60  
e-mail: [info@atax.it](mailto:info@atax.it)  
Internet: [www.atax.it](http://www.atax.it)

## JAPAN

**NIPPON GESCO Ltd.**  
P.O. Box 255 Kyobashi Tokyo  
Ginza Matsuyoshi Bldg.  
17 - 8, 7-Chome, Ginza,  
Chuo-Ku, Tokyo  
Tel.: +81 (0) 3 / 3542.2400  
Fax: +81 (0) 3 / 3542.2420  
e-mail: [mail@gesco.co.jp](mailto:mail@gesco.co.jp)

## KOREA (South)

**Handtools**  
**DONG WON POWER-TECH.INC.**  
108-10 Moonjung-Dong  
Songpa-Ku  
Seoul, Korea  
Tel.: +82 (0) 2 / 409.1344  
Fax: +82 (0) 2 / 409.1345  
e-mail: [kilpyungdw@dreamwiz.com](mailto:kilpyungdw@dreamwiz.com)

## Screwdriving / Assembly Technology

**Fatec Co.Ltd.**

#717 LG Palace B/D  
165-8 Dongkyo-dong  
Mapo-gu Seoul,  
Korea  
Tel.: +82 (0) 2 / 2 688.2152  
Fax: +82 (0) 2 / 2 688.2893  
e-mail: [fatec@chollian.net](mailto:fatec@chollian.net)  
e-mail: [fatec@fatec.co.kr](mailto:fatec@fatec.co.kr)

## LITHUANIA

**HIDROTEKA**  
P.O. Box 572  
LT-3028 KAUNAS  
Tel.: +370 (0) 37 / 352195  
Fax: +370 (0) 37 / 351952  
e-mail: [hidroteka@hidroteka.lt](mailto:hidroteka@hidroteka.lt)

## LUXEMBOURG

**Comptoir Technique et Industriel**  
321, Route d'Arlon  
L-8011 Strassen  
Penang, MALAYSIA  
Tel.: +352 / 31 31 40  
Fax: +352 / 31 31 95

## MALAYSIA

**FI INNOVATION ENTERPRISE**  
175, MK D Jalan Bahru  
Balik Pulau 11000  
Penang, MALAYSIA  
Tel. +60/13/ 449.0386 / +60/16/ 403.6797  
Fax: +60/4/ 866.0785  
e-mail: [farisfi@tm.net.my](mailto:farisfi@tm.net.my)

## NETHERLANDS

**Zumpolle B.V.**  
Postbus 29  
NL-5306 ZG  
Brakel/Niederlande  
Tel.: +31 (0) 4 18 / 67 18 16  
Fax: +31 (0) 4 18 / 67 32 17  
Internet: <http://www.zumpolle.net>  
e-mail: [info@zumpolle.net](mailto:info@zumpolle.net)

## NORWAY

**Deprag Scandinavia AB**  
Gap Sundins väg 3  
SE-63346 Eskilstuna  
Universal Import  
Tel.: +47 (0) 2 / 2681.530  
Fax: +47 (0) 2 / 2199.127

## POLAND

**ELKREM SPOLKA Z O.O.**  
ul. Wielki Row 40B  
87-100 Torun  
Tel.: +48 / 56 / 662.3881  
Fax: +48 / 56 / 662.3882  
e-mail: [elkrem@to.onet.pl](mailto:elkrem@to.onet.pl)

## PORTUGAL

**Anibal Pires Lda.**  
A.P. 23  
E.N. 1 - Mourisca do Vouga  
P-3750 TROFA AGD  
Tel.: +351 (0) 234 / 646.820  
Fax: +351 (0) 234 / 646.815  
Internet: <http://www.anibalpires.pt>  
e-mail: [anibalpires@mail.telepac.pt](mailto:anibalpires@mail.telepac.pt)

## SINGAPORE

**Testel Systems Pte Ltd**  
1200 Depot Road # 04-07/09  
Singapore 109675  
Tel.: +65 / 6271-3688  
Fax: +65 / 6271-8866  
Internet: <http://www.testel.com.sg>  
e-mail: [sunny@testel.com.sg](mailto:sunny@testel.com.sg)

## SLOVENIA

**MB-NAKLO D.O.O.**  
Toma Zupana 16  
SLO-4202 NAKLO  
Tel.: +386 (0) 4 / 277 17 00  
Fax: +386 (0) 4 / 277 17 17  
e-mail: [mb-naklo@siol.net](mailto:mb-naklo@siol.net)

## SPAIN

**ALCOTAN SISTEMAS S.A.**  
p° de la Direccion, nmro. 95,  
local  
E-28039 Madrid  
Tel.: +34 91 / 311.17.84 + 311.18.01  
Fax: +34 91 / 311.60.53  
e-mail: [alcotansis@jazzfree.com](mailto:alcotansis@jazzfree.com)

BARCELONA office:  
Passeig de la Mare de Déu del  
Coll, 122-124  
E-08023 Barcelona  
Tel.: +34 93 / 2 85 50 34

## SWEDEN

**DEPRAG Scandinavia AB**  
Gap Sundins Väg 3  
S-633 46 Eskilstuna  
Tel.: +46 (0) 16-12 61 10  
Fax: +46 (0) 16-13 31 88  
Internet: <http://www.deprag.se>  
e-mail: [info@deprag.se](mailto:info@deprag.se)

## SWITZERLAND

**LIMATEC Automation AG**  
Burgunderstr. 13  
CH-4562 Biberist  
Tel.: +41 (0) 32 / 6542900  
Fax: +41 (0) 32 / 6542901  
Internet: <http://www.liimatec.ch>  
e-mail: [office@liimatec.ch](mailto:office@liimatec.ch)

## TAIWAN

**I HEN MACHINE Co.Ltd.**  
6F-9, No. 12, Lane 609, Sec. 5  
Chung-Hsin Road,  
San-Chung City  
241 Taipei Hsen  
Tel.: +886 (0) 2 / 2999.6766  
Fax: +886 (0) 2 / 2999.6236

## TURKEY

**MEKA AUTOMOTIVE ASSEMBLY EQUIPMENTS**  
Dicle Caddesi, Tunca Sokak No : 6  
Beysukent - Beytepe - Ankara -  
TURKEY  
Tel.: +90 / 312 / 236 2558  
Tel.: +90 / 312 / 236 2559  
Fax: +90 / 312 / 236 0991  
Internet: [www.me-ka-assembly.com](http://www.me-ka-assembly.com)  
e-mail: [melih@me-ka-assembly.com](mailto:melih@me-ka-assembly.com)

## USA, MEXICO, CANADA

**DEPRAG INC.**  
645 Hembry St. / P.O. Box 1554  
Lewisville, TX 75057-4726  
Tel.: +1 / 972 / 221 - 8731  
Fax: +1 / 972 / 221 - 8163  
Toll Free: (800) 4 DEPRAG  
Internet: <http://www.deprag.com>  
e-mail: [deprag@depragusa.com](mailto:deprag@depragusa.com)

## VENEZUELA

**Suministros Tecnicos SUMTEC C.A.**  
Av. Francisco de Miranda, Centro Plaza  
Torre C, Piso 16, Oficina C16 A-B  
Urb. Los Palos Grandes  
Caracas 1060  
Tel.: +58 (0) 212 - 28 56 41 0  
Fax.: +58 (0) 212 - 28 51 94 7

# DEPRAG

**DEPRAG SCHULZ GMBH u. CO.**

Postfach 1352, D-92203 Amberg

Kurfürstenring 12-18, D-92224 Amberg

(09621) 371-0

Fax (09621) 371-120

Internet: <http://www.deprag.com>

e-mail: [info@deprag.de](mailto:info@deprag.de)



ZERTIFIZIERT NACH DIN EN ISO 9001

---

Sep-05 Änderungen vorbehalten / Technical alterations reserved