

Operating Instruction Booklet

Pneumatic Rammer

VSt10

270157 A

Dear Customer:

This tool is the result of more than 70 years of experience in the design and manufacturing of pneumatic tools for the industrial market.

We kindly ask that you read these operating instructions carefully so that you will be able to use this tool safely and for many years to come.

If you need additional information, please contact your DEPRAG Representative, one of our international support offices or us direct at DEPRAG. We will be happy to answer any questions. Please visit our web site: www.deprag.com

Content

1	SAFETY TIPS	3
1.1.	General Safety Tips	3
1.2.	Safety Tips for Rammers	4
1.3.	Owner Obligation	6
1.4.	Operator Obligation	6
1.5.	Warranty and Liability	7
1.6.	Symbol Description	8
1.7.	Observe Environmental Regulations	10
2	DESIGNATED EQUIPMENT USE	10
3	INSTALLATION	11
4	OPERATION	12
5	HANDLING	13
6	ASSEMBLY - DISASSEMBLY	14
6.1.	Spare Parts Drawing	15
7	MAINTENANCE AND UPKEEP	16
7.1.	Wear Parts	17
8	TROUBLE SHOOTING	18
9	DELIVERY CAPACITY	18
10	STORAGE	18
11	TECHNICAL DATA	19
12	DISPOSAL	19
13	CONFORMITY DECLARATION	20
14	SERVICE LOCATIONS AND AUTHORIZED PARTNERS	21

1 Safety Tips

1.1. General Safety Tips



Before operating tool make sure to carefully read and observe this operating instruction.

Generally, the operator of the equipment and/or machinery is responsible for the equipment's perfect condition and operation, while observing all necessary safety regulations. The equipment and/or machinery has been constructed in accordance with the newest level of technology while recognizing all necessary safety-related requirements. Nevertheless, while operating the equipment and/or machinery there is a risk of bodily harm to the operator as well as damage to equipment and/or machinery and other property.

Operate the equipment and/or machinery only if equipment/machinery

- Is used for the task it was designed for
- is in perfect working condition and safe to use.

It is important to observe the technical data of the equipment, especially in regards to the environmental temperatures. The designated area of use for this equipment is clearly described in chapter *Designated Equipment Use* and those requirements have to be observed as well. Prerequisite for the safe conduct and the uninterrupted operation of the equipment, is the knowledge of the basic safety tips and the safety regulations. Additionally, all current regulations for a safe operational area, for accident-prevention guidelines of electrical and mechanical installations, as well as noise suppression demands must be observed. During any maintenance or repair work, a clean work surface is recommended. Also, it is not recommended to either eat or smoke during repair or maintenance. Arbitrary changes made to the equipment, which alters its designated use, voids the warranty and cancels the manufacturers liability.

- The tool is not insulated to protect against an electrical power surge.
- It is not recommended to use this tool in explosive hazardous environments, unless it was specifically designed for such a use.
- During the disconnection or reconnection of the tool from the compressed air, an injury is possible because of a whipping pressure-hose.

The operating instruction booklet, especially the safety symbols and safety tips attached to the equipment or included in the documentation, must be observed at all times by all persons getting into contact with the equipment.

1.2. Safety Tips for Rammers



- Disconnect tool from power supply when exchanging tool inserts or servicing the tool.
 - Do not wear any loose clothing or jewelry. These may get caught by moving parts. Make sure to wear a hair-net.
 - Keep your hands off the tooling used.
 - Pay attention to possible abrupt movements of the machine due to reaction forces or breaking of used tooling or workpieces.
 - Working with rammers may produce dust and depending on the material of the working surface this may be bad for the operator's health.
 - Personal protective devices and dust vacuum systems must be provided depending on the material of the work pieces / surfaces.
 - Wear eye and ear protection; gloves and protective clothing is recommended, too.
 - Working operations may cause fragmentation or even destruction of the work piece.
 - Insert tools improperly fastened or damaged may cause strong vibrations.
 - The operator's incorrect body carriage will not allow a proper reaction to normal or unexpected movements of the rammer. Therefore, please make sure to carry yourself so that you are even prepared for a possible breaking of the insert tool.
 - Holding the rammer in the hand freely may lead to vibration injuries.
-
- The maximum operating pressure (flow pressure) must not be exceeded. A pressure regulator should be integrated so that the pressure will be adjusted before reaching the rammer.
 - Please note that the insert tool may turn a few more cycles after switch-off.
 - In case air supply is interrupted, make sure to release start button/lever, because otherwise tool will restart with re-installed air supply.
 - There is a risk of getting hurt by a whip-lashing air hose - please pay careful attention.
 - Permissible inserting tools with a suitable shaft diam. only must be used.
 - Do not run tools in the vicinity of inflammable liquids or gases.
 - Use lubricators recommended by DEPRAG, only.
 - Pay attention to firmly tighten handle.

- Start operation of the rammer only if the tool is fixed.
- Do operate the tool only, if it is in perfect condition and will be applied as per its appropriate purpose according to the relevant safety instructions.
- Avoid impacts without load.
- When interrupting operations, make sure to store the rammer so that it will not get dirty.
- Don't point the rammer towards human beings.
- Hold the rammer tightly in both hands and then actuate the start lever.
- Before starting any operations, do mind to visually check the rammer and tool inserts for signs of heavy wear or other damage and, if need be, replace these parts by appropriate ones (otherwise risk of injuries).
- Do not expose tool to rain. Make sure to provide good lighting.
- Pay attention to a firm foothold and fix the workpiece properly before operation.
- Do provide devices for cleaning the air at the working place, in case explosive dust, steam or aerosols dangerous to your health may occur.
- This DEPRAG-rammer should not be used for any other job than originally designated.
- In case of extraordinary high vibration and noise, switch off the machine immediately and check if movable parts are damaged.
- In untidy working areas dangerous accidents may occur.
- Do not modify neither rammer nor inserting tool after receipt!
- Do take due note of special markings, limitations or any other explicit instructions of use such as "Hearing protection", etc.
- Before start-up of tool make sure to visually check both the rammer and the rammer inserts, whether they are okay and not damaged in any way and whether they are appropriate for the work ahead.

1.3. Owner Obligation

The owner is obliged to only let persons operate the equipment, who

- are familiar with basic work environment safety rules and accident-preventing regulations. Also, those persons must have been instructed in the correct use of the equipment.
- have read and understood all safety and warning notifications in the Operating Instruction Booklet, as well as all other documentation pertaining to this equipment.
- check and confirm at regular intervals, that a safety oriented operation is guaranteed.

Only qualified and authorized personnel is allowed to operate, maintain and repair this equipment. A malfunction, which impairs operator safety, must be immediately removed.

1.4. Operator Obligation

Personnel, who is engaged in the operation of the equipment, must always be committed to

- observe the basic safety and accident preventing regulations,
- read and observe the safety and warning notifications of this operating instruction booklet.

1.5. Warranty and Liability

Unless otherwise specified, our “General Sales and Delivery Conditions” apply. Warranty and liability claims in regards to persons or equipment damages are invalid, if one or several of the following causes apply:

- Use of the equipment in a non-designated application.
- Improper installation, operation, service or maintenance of the machine.
- Operation of the machine with either defective or removed safety and protection devices.
- Non-observance of the requirements stated in the operating instruction booklet, in regards to transportation, storage, mounting, installation, operation, maintenance and service of the equipment.
- Structural change or adjustment on the equipment to a non-designated use.
- Inadequate supervision of wear parts.
- Improper repair, inspection or maintenance.
- Catastrophic cases because of a war, acts of god or other reasons which are beyond our control.

1.6. Symbol Description



Read and observe the Operating Instruction Booklet, prior to and during operation of tool.



DANGER

Reference to an immediate danger to a person. May lead to serious injuries or even death, if unobserved!



Waste Oil

Properly recycle environmentally damaging grease, cooling agents or detergents.



RECOMMENDATIONS

Important or additional information on the equipment or in the documentation.



Use eye protection or wear safety goggles.

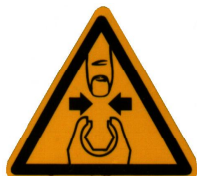


Wear hearing protection.



Warning against hand-injuries.

Attention: Keep away your hands from areas, which are marked with this symbol!



Hands may be crushed, seized or otherwise injured.



ESD-protected area

Equipment may be damaged or destroyed by an electrostatic discharge.

Maintenance and repair on hydraulic and pneumatic equipment may only be performed by specially trained personnel!



Disconnect equipment from air supply, prior to repair of pneumatic or hydraulic equipment.

Provide regular preventive maintenance on hoses and airlines. Exchange hose lines, even if there is no visible damage! (Observe corresponding requirements of the manufacturer!)

After repair and maintenance, check the following items:

- make sure all detached and re-attached connections are solid.
- confirm that removed covers, screens or filters were re-installed
- During disconnecting or reconnecting of an air-operated equipment, injury may occur due to a whipping air-hose

After conclusion of maintenance or repair and prior to start of operation, make sure to

- remove all materials, tools and other supplies needed for the maintenance or repair from work area of the equipment
- remove leaking liquid or oils
- make sure all safety devices on the equipment work perfectly!

1.7. Observe Environmental Regulations



When working on or with the equipment, it is imperative to observe all requirements in regards to waste-disposal and proper recycling.

Especially during installation, repair or maintenance, water damaging agents such as

- lubricating grease and oil
- hydraulic fluid
- cooling agents
- solvent-containing cleaning agents

must not leak into the ground or into the sewage system!

Such materials must be stored, transported, contained and recycled in suitable containers.

2 Designated Equipment Use

Rammers with malleable cast iron or rubber butts are especially used for ramming of molding flasks in foundries, lining of martin- and electric kiln as well as Bessemer converters, and also for ramming of concrete and soil in construction work and in cement and artificial stone factories.

3 Installation

- Blow out air line and pressure hose, prior to connection it to the equipment.
- The hoses must be free of bends and kinks.
- Make sure, that all air lines have a sufficient cross-section and remove possible throttle areas.
- The rammer **must be operated with lubricated air**. Connect the rammer as follows:

for the use with minimal lubrication connect to a filter-regulator consisting of Filter with condensation reservoir and pressure regulator

Air Consumption	Connecting thread	Part No.
0,05 - 0,5 m ³ /min	G ¼	822408 A
0,15 – 0,9 m ³ /min	G 3/8	826981 A
0,5 – 1,5 m ³ /min	G ½	822409 A
0,8 – 6,0 m ³ /min	G ¾	826982 A

in connection with a Point-of-Use Oiler (Part No. 378077 A)

- Check air pressure at F/R/L outlet. The Regulator needs to be adjusted to an airflow of 6.3 bar (90 PSI). A higher pressure than 6.3 bar leads to increased wear and tear. Pressure below 6.3 bar leads to performance loss.

In regards to air-quality according to ISO8573-1, we recommend:

	CLASS	RESIDUE OF OIL	RESIDUE OF DUST		RESIDUE OF WATER	
		Content mg/m ³	Particle Size µm	Concentration max. mg/m ³	Dew Point °C	Pressure Concentration max. g/m ³
Lubricated Air	4	5	15	8	+3	6

4 Operation

Before start-up of the rammer, do clean the holding taper of the tool insert you are going to use as well as the internal taper of the rammer. Put the insert into the internal taper of the rammer.

Exchange of the tool insert:

1. Disconnect the drill from the air supply.
2. Tool insert will be pressed out of the holding taper via a drive (DIN 317).



Before operating the tool, check that insert is securely fastened. A loose insert may cause an injury.

Use only acceptable inserts.

5 Handling

Use the equipment only while observing all safety tips and maintenance regulations. Don't let push the machine without load, because the stop of the piston can be damaged.



Don't keep the inserted tool by your free hand!

This can have adverse effects by vibrations.

With a weighted acceleration $a_{h,w}$ (in accordance with DIN EN 28662-2) over $2,5 \text{ m/s}^2$ use the following formula. The permissible daily time of exposition T (in relations with the 8 standard-working hours) with the use of a machine can be approximated for one operator with the following formula:

$$T[h] = \left(\frac{5}{a_{h,w}} \right)^2 \cdot 8$$

T = time of exposition

$a_{h,w}$ = Value of weighted acceleration (look at techn. Data: Vibration)

6 Assembly - Disassembly

Disassembly: (see Spare Parts Drawing)



Prior to disassembly, disconnect equipment from air supply ! Only experienced maintenance personnel may assemble or disassemble this equipment.

After repair or maintenance, verify that equipment runs to specification!

Principally, use only DEPRAG original spare parts. Otherwise, a reduction in equipment power-output and an increased maintenance-requirement occurs. If NON-DEPRAG parts are installed, DEPRAG is justified to void any existing warranty and liability obligations.

1. Clamp cylinder 270158 with light metal chucking jaws into a vice.
2. Loosen and unscrew cylinder hood 270160 (AF 41).
3. For further disassembly – see spare parts drawing.

Assembly:

For assembly proceed logically in reverse order with reference to disassembly!



Prior to assembly, do clean all parts, check whether they are worn off at all and slightly lubricate them.

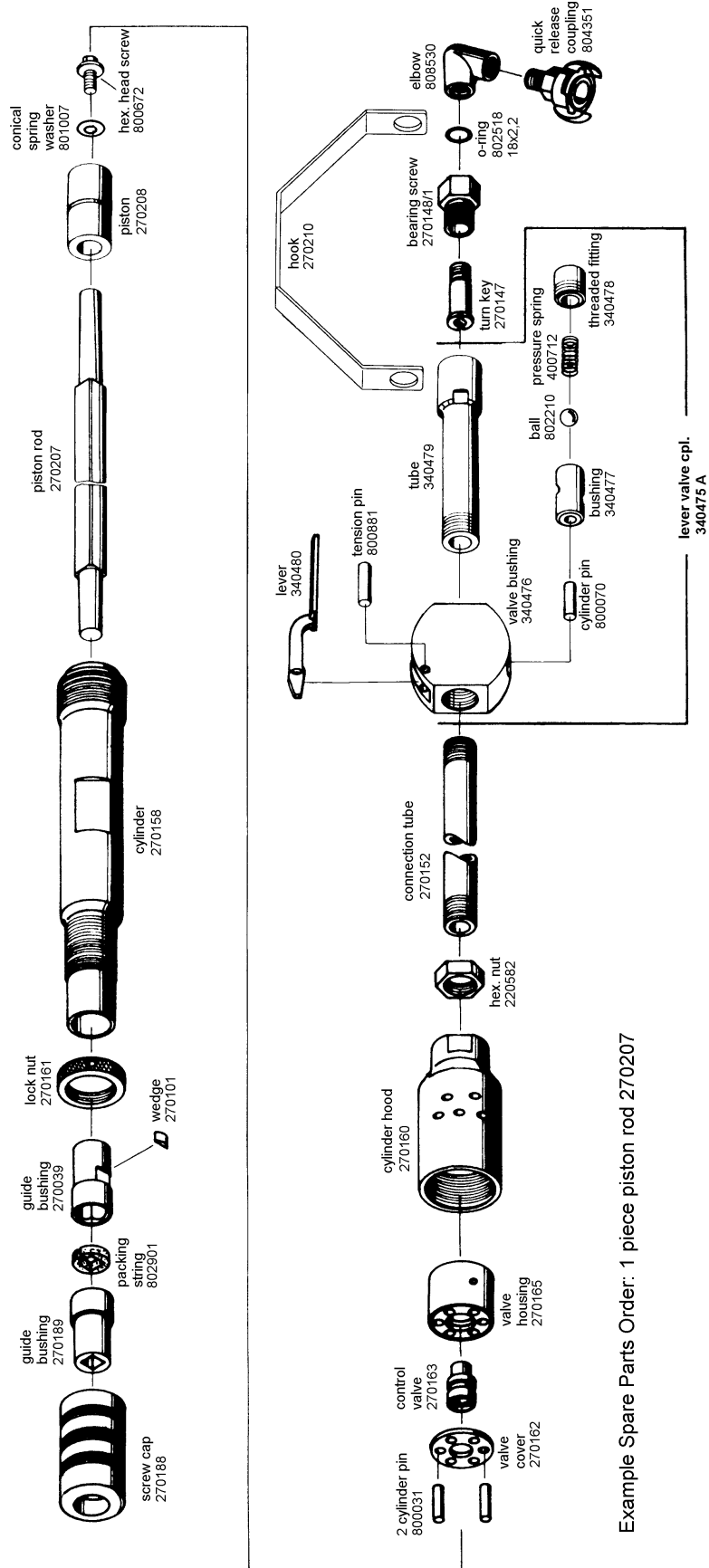
Replace worn or damaged parts by original DEPRAG-parts only.



Attention:

When re-assembling the tool, make sure to correctly position wedge 270101 in the guide bushing 270039.

6.1. Spare Parts Drawing



Example Spare Parts Order: 1 piece piston rod 270207

7 Maintenance and Upkeep

Testing and maintenance can be provided by Operator. Incorrect assembly or disassembly may lead to injury of operators and damage the tool.

The tool requires little maintenance. If the following service instructions are observed, the tool will have a long life expectancy and will remain in a safe condition.

- Check tool on a regular basis for external damage.
- Check your maintenance unit on a regular basis, make sure that sufficient oil is in the lubricator (if lubrication is used) and that the adjustment is correct. We recommend for your lubricator DEPRAGOL, part 790081 E (250 cm³).
- We recommend to service the tool once a year or after 300 hours of operation.
- After assembly, fill 2 – 3 drops of DEPRAGOL into the air inlet nipple.
- In case of tool malfunctions, we recommend to send the machine to DEPRAG.
- Corrosion and filth are the major source of problems with the tool. When moving or storing the rammer, pay attention to the fact that no filth nor water may get into the tool through the air inlet or the exhaust openings.
- Blow through the hoses before connecting them and check whether the screen in the screen support is clean.
- During operations only little lubrication is needed – however, after completion of the job protection by some oil layer is required.
- **We recommend:** Put some drops of oil into the air inlet.
- The inserting ends of the tool must be within dimension tolerances and clean and the impacting surface must be plane. Blunt inserting/treating tools will result in reduced performance and higher fatigue of rammer and operator.
- Use perfectly tapered ramming inserts only and make sure to loosen these inserts by means of the appropriate taper key (wedge) only, in order to avoid bending the piston rod.
- Normally the main lubricator on the compressor should suffice to lubricate the tools. When working with long-range hoses or at different height levels we would recommend to include an additional lubricator in the air lines.
- When operating tool in winter, use defrosting agent (such as Kilfrost).
- Preventive servicing will limit repair cost and avoid expensive breakdown

Maintenance:

It is also very important to properly seal the piston rod, so that no dirt may penetrate into the inside of the rammer.

- For this loosen nut 270161 and unscrew screw cap 270188.
- Remove packing string 802901 and guide bushing 270189 by pulling the piston rod 270207.
- Replace sealing parts if they are worn off.



Attention:

When re-assembling the tool, make sure to correctly position wedge 270101 in the guide bushing 270039.

7.1. Wear Parts

QUANTITY	NAME	PART No.
1	Piston	270208
1	Piston rod	270207

8 Trouble Shooting

In the case of a malfunction, check and observe all instructions contained in this technical documentation. If necessary, adjust equipment as needed.

Possible faults and their causes are shown below:

FAULT	CAUSE	SOLUTION
Insufficient Power	Insufficient lubrication	Provide the required air-quality
	Air pressure too low	Minimum air pressure should be 90 PSI for maximum performance
	Restriction in air hose	Remove bends or other restrictions
	Hose I.D. is too small	Use required hose I.D.
Machine does not start	No air, shut-off valve is closed	Open shut-off valve

If necessary, send the equipment to DEPRAG.

9 Delivery Capacity

Please check the delivery capacity in regards to its completeness.

QUANTITY	NAME	PART No.
1	Operating Instruction Booklet	010272EN
1	Rammer	270157 A

10 Storage

Unused machines should be stored in a dry, locked area.

11 Technical Data

Manufacturer DEPRAG SCHULZ GMBH u. CO.
Address Kurfürstenring 12 - 18 Postfach 1352
D-92224 Amberg D-92203 Amberg
Phone 09621/371-0
Fax 09621/371-120

Technical Data:

TYPE PART No.	VS10 270157 A
No. of Impacts (rpm)	650
Air Consumption (m ³ /min)	0,8
Tool fitting-Morse Taper	MK2
Piston dia. (mm)	32
Piston stroke (mm)	160
Length (mm)	1200
Weight (kg)	9,3
Hose I.D. (mm)	13
Thread size	G ½ i
Air pressure (bar/PSI)	6,3 / 90
Vibration (m/s ²)	19,0

12 Disposal

Unused machines should be stored in a dry, locked area. Disassemble the machine for the required disposal complete. Observe local and environmental regulations for the separation and recycling of materials.



Recycle waste oil to avoid environmental contamination!

13 Conformity Declaration

EC-Conformity Declaration according to the EC-Machine-Guidelines 98/37/EC, Amendment IIA

We,

DEPRAG SCHULZ GMBH & CO.
PO Box 1352
D-92203 Amberg

hereby confirm, that the design of the
rammer

VSt10

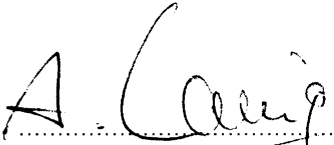
conforms to the following, relevant regulation:

- EC-Machine-Guidelines, Version 98/37/EC, Amendment No. 1 and No. 2.2.

Applicable Standard:

- EN 292

Amberg, 30.09. 2005


Dipl. Ing. (FH) A. Langig
Mr. Design Dept

14 Service Locations and Authorized Partners

ARGENTINA

ERIN s.a.

Av. Constituyentes 5751
RA-1431 Buenos Aires
Tel./Fax: +54 (0) 11 / 4573.1313

AUSTRIA

Amersin Olschinsky GmbH

Kastnerweise 1
A-2441 Mitterndorf a.d. Fischa
Tel.: +43 (0)1 / 8 69 87 66
Fax: +43 (0)1 / 8 65 16 97
Internet: <http://www.amersin.at>
e-mail: information@amersin.at

AUSTRALIA

De Rossi Industrial Pty. Ltd.

Unit 1 – 2 / 600 Liverpool Road
Strathfield South, N.S.W. 2136
Tel.: +61 (0)2 / 8732.7200
Fax: +61 (0)2 / 8732.7299
e-mail: sales@derossi.com.au

BELGIUM

Aijkens en Zumpolle B.V.

Postbus 29
NL-5306 ZG
Brakel/Niederlande
Tel.: +31 (0)4 18 / 67 18 16
Fax: +31 (0)4 18 / 67 32 17
Internet: <http://www.zumpolle.net>
e-mail: info@zumpolle.net

BRAZIL

METALFEMA Ltda.

Rua Saõ Pedro, 786
Saõ Leopoldo – RS –
BRAZIL
ZIP 93.010-260
Tel.: +55 (0) 51 / 3592.4050
Fax: +55 (0) 51 / 3590.1856
e-mail: mtfma@zaz.com.br

PR CHINA

DEPRAG China

DEPRAG Assembly Technologies
(Suzhou) Co.Ltd.
No. 5, Xinghan St, Blk. A#06-16
Suzhou 215021, P.R. China
Tel.: +86 (0) 512 – 6767 – 1180 – 100
Fax: +86 (0) 512 – 6767 – 1190
Internet: www.deprag.com.cn
e-mail: biz@deprag.com.cn
e-mail: d.hua@deprag.com.cn

CROATIA

SM AUTOMATIKA D.O.O

Trg i. Kukuljevicica 6
HR-10090 Zagreb
Tel.: +385(0)13 89 41 79
Fax: +385(0)13 87 89 78
Internet: <http://www.sm-automatika.hr>
e-mail: info@sm-automatika.hr

CZECHIA/SLOWAKIA

DEPRAG CZ a.s.

ul. T.G. Masaryka 113
CZ -50781 Lázně Bělohrad
Tel.: +420 (0) 4 93 / 79 24 11
Fax: +420 (0) 4 93 / 79 25 12
Internet: <http://www.deprag.com>
e-mail: info@deprag.cz

DENMARK

DEPRAG Scandinavia AB

Gap Sundins väg 3
SE-63346 Eskilstuna
Tel.: +45 (0) 98 57 22 50
Fax: +45 (0) 98 57 22 53
Internet: <http://www.deprag.com>
e-mail: keld.branner@get2net.dk

ESTLAND

Pneumacon OY

Läkkisepäntie 4
FI-00620 Helsinki
Tel.: +358 (0) 9 / 7288.160
Fax: +358 (0) 9 / 7288.1610
Internet: <http://www.pneumacon.fi>
e-mail: info@pneumacon.fi
e-mail: harri.lindroos@pneumacon.fi

FINLAND

Pneumacon OY

Läkkisepäntie 4
FI-00620 Helsinki
Tel.: +358 (0) 9 / 7288.160
Fax: +358 (0) 9 / 7288.1610
Internet: <http://www.pneumacon.fi>
e-mail: info@pneumacon.fi
e-mail: harri.lindroos@pneumacon.fi

FRANCE

DEPRAG S.A.R.L.

30 Z.I. du Ried
F-67590 SCHWEIGHOUSE sur Moder
Tel.: +33 388 / 06.14.17
Fax: +33 388 / 93.01.08
e-mail: depragfrance@evc.net

GERMANY

Werk Amberg

Kurfürstening 12-18,
D-92224 Amberg
Postfach 1352,
D-92203 Amberg
Tel.: +49 (0) 9621 / 3 71-3 71
Fax: +49 (0) 9621 / 3 71-1 20
Internet: <http://www.deprag.com>
e-mail: info@deprag.de

GREAT BRITAIN

DEPRAG Limited

Holly Farm Business Park
Honiley, Kenilworth
Warwickshire CV8 1NP
Tel.: +44 (0) 1926 485480
Fax: +44 (0) 1926 485481
Internet: www.deprag.co.uk
e-mail: m.searle@deprag.co.uk

GREECE

D. Panayotidis – J. Tsatsis s.a.

6 Pireos Street – Moschaton
Athen
Tel.: +30 (0) 1 / 4810.817-8-9
Fax: +30 (0) 1 / 482 96 73

HUNGARY

ADLER '91

Export/Import Kereskedelmi
Takarék u. 18/B
H-8800 Nagykanizsa
Tel./Fax: +36 (0) 93 / 314 633
e-mail: adler91adlovits@chello.hu

Nóniusz Tool Trading House Ltd.

Köbányai út. 47/6
H-1101 Budapest
Tel.: +36 (0) 1 / 260 030 30
Fax: +36 (0) 1 / 260 060 83
Internet: <http://www.noniusz.hu>
e-mail: noniusz@noniusz.hu

INDIA

LEAPTECH Corporation
812 Cosmos, Sector – 11
CBD Belapur
New Mumbai – 400 614
Tel.: +91 / 22 / 2756.2822/2849
Fax: +91 / 22 / 2756.2881
Internet: www.leaptechcorp.com
e-mail: leaptech@vsnl.net

DELHI office:

C-332, Sector – 10
Noida – 201 301
Tel.: +91 / 120 / 253.1393
Fax: +91 / 120 / 253.1060

BANGALORE office:

53, Anchor
Suddagundapalaya
C.V. Raman Nagar
Bangalore – 560 093
e-mail: leaptechbg@vsnl.net

IRAN

FARA SANAT Co.

No. 117, Abzar & Yaragh passage
Postcode 1136748173
Tehran
Tel.: +98 (0) 21 / 673.2918 / 670.6340
Fax: +98 (0) 21 / 673.4757

NACCARSON AIR TOOLS Co., Ltd.

Azadi Ave. No. 625
IR-Tehran 14 588
Tel.: +98 (0) 21 / 66006602 + 66015656
Fax: +98 (0) 21 / 66009451

IRELAND

Production Equipment Ltd.

Riverside Commercial Estate
IRL-Galway
Tel.: +353 (0) 91 / 745 100
Fax: +353 (0) 91 / 751 299
e-mail: sales@productionequipment.ie

ITALY

DREX PALLOTTI S.r.l
Via A. Manzoni, 19
I-20090 Vimodrone/Mi
Tel.: +39 02 / 2740 0561 + 0569
Fax: +39 02 / 2740 0607
e-mail: pallotti@drex.com

ATAX S.r.l.

Via Carolina Romani, 23
I-20091 Bresso/Mi
Tel.: 0039 02/ 61.03.48.61
Fax: 0039 02/ 61.03.48.60
e-mail: info@atax.it
Internet: www.atax.it

JAPAN

NIPPON GESCO Ltd.
P.O. Box 255 Kyobashi Tokyo
Ginza Matsuyoshi Bldg.
17 - 8, 7-Chome, Ginza,
Chuo-Ku, Tokyo
Tel.: +81 (0) 3 / 3542.2400
Fax: +81 (0) 3 / 3542.2420
e-mail: mail@gesco.co.jp

KOREA (South)

Handtools
DONG WON POWER-TECH.INC.
108-10 Moonjung-Dong
Songpa-Ku
Seoul, Korea
Tel.: +82 (0) 2 / 409.1344
Fax: +82 (0) 2 / 409.1345
e-mail: kilpyungdw@dreamwiz.com

Screwdriving / Assembly Technology

Fatec Co.Ltd.

#717 LG Palace B/D
165-8 Dongkyo-dong
Mapo-gu Seoul,
Korea
Tel.: +82 (0) 2 / 2 688.2152
Fax: +82 (0) 2 / 2 688.2893
e-mail: fatec@chollian.net
e-mail: fatec@fatec.co.kr

LITHUANIA

HIDROTEKA
P.O. Box 572
LT-3028 KAUNAS
Tel.: +370 (0) 37 / 352195
Fax: +370 (0) 37 / 351952
e-mail: hidroteka@hidroteka.lt

LUXEMBOURG

Comptoir Technique et Industriel
321, Route d'Arlon
L-8011 Strassen
Penang, MALAYSIA
Tel.: +352 / 31 31 40
Fax: +352 / 31 31 95

MALAYSIA

FI INNOVATION ENTERPRISE
175, MK D Jalan Bahru
Balik Pulau 11000
Penang, MALAYSIA
Tel. +60/13/ 449.0386 / +60/16/ 403.6797
Fax: +60/4/ 866.0785
e-mail: farisfi@tm.net.my

NETHERLANDS

Zumpolle B.V.
Postbus 29
NL-5306 ZG
Brakel/Niederlande
Tel.: +31 (0) 4 18 / 67 18 16
Fax: +31 (0) 4 18 / 67 32 17
Internet: <http://www.zumpolle.net>
e-mail: info@zumpolle.net

NORWAY

Deprag Scandinavia AB
Gap Sundins väg 3
SE-63346 Eskilstuna
Universal Import
Tel.: +47 (0) 2 / 2681.530
Fax: +47 (0) 2 / 2199.127

POLAND

ELKREM SPOLKA Z O.O.
ul. Wielki Row 40B
87-100 Torun
Tel.: +48 / 56 / 662.3881
Fax: +48 / 56 / 662.3882
e-mail: elkrem@to.onet.pl

PORTUGAL

Anibal Pires Lda.
A.P. 23
E.N. 1 - Mourisca do Vouga
P-3750 TROFA AGD
Tel.: +351 (0) 234 / 646.820
Fax: +351 (0) 234 / 646.815
Internet: <http://www.anibalpires.pt>
e-mail: anibalpires@mail.telepac.pt

SINGAPORE

Testel Systems Pte Ltd
1200 Depot Road # 04-07/09
Singapore 109675
Tel.: +65 / 6271-3688
Fax: +65 / 6271-8866
Internet: <http://www.testel.com.sg>
e-mail: sunny@testel.com.sg

SLOVENIA

MB-NAKLO D.O.O.
Toma Zupana 16
SLO-4202 NAKLO
Tel.: +386 (0) 4 / 277 17 00
Fax: +386 (0) 4 / 277 17 17
e-mail: mb-naklo@siol.net

SPAIN

ALCOTAN SISTEMAS S.A.
p° de la Direccion, nmro. 95,
local
E-28039 Madrid
Tel.: +34 91 / 311.17.84 + 311.18.01
Fax: +34 91 / 311.60.53
e-mail: alcotansis@jazzfree.com

BARCELONA office:
Passeig de la Mare de Déu del
Coll, 122-124
E-08023 Barcelona
Tel.: +34 93 / 2 85 50 34

SWEDEN

DEPRAG Scandinavia AB
Gap Sundins Väg 3
S-633 46 Eskilstuna
Tel.: +46 (0) 16-12 61 10
Fax: +46 (0) 16-13 31 88
Internet: <http://www.deprag.se>
e-mail: info@deprag.se

SWITZERLAND

LIMATEC Automation AG
Burgunderstr. 13
CH-4562 Biberist
Tel.: +41 (0) 32 / 6542900
Fax: +41 (0) 32 / 6542901
Internet: <http://www.liimatec.ch>
e-mail: office@liimatec.ch

TAIWAN

I HEN MACHINE Co.Ltd.
6F-9, No. 12, Lane 609, Sec. 5
Chung-Hsin Road,
San-Chung City
241 Taipei Hsen
Tel.: +886 (0) 2 / 2999.6766
Fax: +886 (0) 2 / 2999.6236

TURKEY

MEKA AUTOMOTIVE ASSEMBLY EQUIPMENTS
Dicle Caddesi, Tunca Sokak No : 6
Beysukent - Beytepe - Ankara -
TURKEY
Tel.: +90 / 312 / 236 2558
Tel.: +90 / 312 / 236 2559
Fax: +90 / 312 / 236 0991
Internet: www.me-ka-assembly.com
e-mail: melih@me-ka-assembly.com

USA, MEXICO, CANADA

DEPRAG INC.

645 Hembry St. / P.O. Box 1554
Lewisville, TX 75057-4726
Tel.: +1 / 972 / 221 - 8731
Fax: +1 / 972 / 221 - 8163
Toll Free: (800) 4 DEPRAG
Internet: <http://www.deprag.com>
e-mail: deprag@depragusa.com

VENEZUELA

Suministros Tecnicos SUMTEC C.A.
Av. Francisco de Miranda, Centro Plaza
Torre C, Piso 16, Oficina C16 A-B
Urb. Los Palos Grandes
Caracas 1060
Tel.: +58 (0) 212 - 28 56 41 0
Fax.: +58 (0) 212 - 28 51 94 7

DEPRAG

DEPRAG SCHULZ GMBH u. CO.

Postfach 1352, D-92203 Amberg

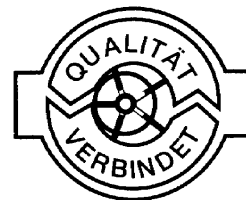
Kurfürstenring 12-18, D-92224 Amberg

(09621) 371-0

Fax (09621) 371-120

Internet: <http://www.deprag.com>

e-mail: info@deprag.de



ZERTIFIZIERT NACH DIN EN ISO 9001

Sep-05 Änderungen vorbehalten / Technical alterations reserved