

# DEPRAG

## Operating Instructions

### Air Motor

130F10LZ  
130F10LZ

444520 B  
444520 C

# DEPRAG

## DEPRAG SCHULZ GMBH u. CO.

Postfach 1352, D-92203 Amberg  
Kurfürstenring 12-18, D-92224 Amberg  
Telefon (09621) 371-0  
Fax (09621) 371-120  
Internet: <http://www.deprag.com>  
e-mail: [info@DEPRAG.de](mailto:info@DEPRAG.de)

## DEPRAG INC.

P.O. Box 1554 • Lewisville, Texas 75067 – 1554  
645 Hembry Street • Lewisville, Texas 75057 – 4726  
Phone (972) 221 – 8731 • FAX (972) 221 – 8163  
TOLL FREE (800) 4 DEPRAG  
Internet: <http://www.deprag.com>  
e-mail: [deprag@depragusa.com](mailto:deprag@depragusa.com)



CERTIFIED AS PER DIN EN ISO 9001

Sep-01 Technical alterations reserved

011123 E

Dear Customer:

Congratulations, you chose the enclosed Air Motor from an extensive DEPRAG product line. This tool is the result of more than 60 years experience in the design and manufacturing of pneumatic tools for the industrial market. Please don't hesitate to call on us for all your production tool needs, from individual hand tools to the complete automatic screwdriving cell. Our products offer solutions to all requirements, which may be needed in the assembly sector.

We kindly ask, that you carefully read these operating instructions, so that you will be able to use this tool safely and for many years to come. If you need additional information, please contact your DEPRAG Representative or DEPRAG direct. We will be happy to answer your questions.

We hope you will be pleased with your new tool!

<b>Contents:</b>	<b>Page</b>
1. Safety Tips	2
2. Installation	3
2.1 Dimensions	4
3. Assembly – Disassembly	3
3.1 Parts Listing	5/6
4. Maintenance and Upkeep	7
5. Technical Data	8
6. EC-Declaration of Manufacturer	9

## 6. EC Declaration of Manufacturer

### **Manufacturer's CE-Declaration in accordance with the CE-Machine Guideline 98/37/CE**

DEPRAG SCHULZ GMBH & Co.  
P.O. Box 1352

D-92203 Amberg, Germany


Hereby declares, that the construction of  
the Air Motor

Model No. **130F10LZ**

is designed for the integration with another machine and the operation of this other machine is prohibited until it has been confirmed that this other machine conforms with the CE-Machine Guideline F.98/37/CE as well.

used standards  
- EN 292

Amberg, October 15, 2001

  
Dipl. Ing. (FH) A. Langig  
Mr. Design Dpt.



Before operating tool, make sure to carefully read and observe this operating instruction.

### **1. Safety Tips**

Carefully read this operating instruction booklet prior to the operation of the motor and always observe all requirements during the operation of the motor. The tool should only be used when in perfect working condition; according to its designated use and when all safety- and danger requirements of the operating instructions are complied with. Any malfunction, which could cause a safety hazard, has to be immediately removed. Motor and Accessories should only be used for operations they have been designed for.

Because of product liability and safety reasons, any change made to the motor or corresponding accessory, has to be approved by a DEPRAG technician.

- If the motor is being used in explosive hazardous environments, it is necessary to install a filter/silencer on the exhaust connections of the motor.
- Protect hands, hair and clothing from rotating parts.

Minimum Hose ID: 15 mm

## **2. Installation**

Blow out airline / tubing before connecting it to the motor. Make sure that provided air-pressure amounts to 6 bar (85 PSI). A pressure below 6-bar reduces the tool performance. If pressure is above 6-bar, install a regulator. Check all air-supply hoses in regards to sufficient airflow; avoid bends or kinks. A non-reversible motor (either right- or left rotation only) is connected using one airline only. Install a silencer into the unused opening. The exhaust air can be removed through an exhaust hose or a silencer. A reversible motor is connected with two airlines. The control of the motor is done by one 5/3-way valve. For positioning and dimensions of the motor, please refer to picture 1: Dimensions.

Operation with lubricated air increases the motors lifespan. Use a filter/lubricator, correctly adjusted and filled with resin- and acid-free lubrication oil (DEPRAG-Oil 790081 A, 250 cm<sup>3</sup>). Use approximately 1 - 2 drops of oil per 1 m<sup>3</sup> air consumption.

### **2.1 Dimensions**

see Picture 1, Page 4

## **3. Assembly - Disassembly** see picture 2 pages 5/6

Use DEPRAG spare parts only. Non-DEPRAG parts may cause a performance reduction and will increase maintenance requirements. If Non-DEPRAG parts are used, DEPRAG is released from all product- and safety liabilities.

### **3.1 Parts Listing**

see Picture 2, Pages 5/6

## **5. Technical Data**

Manufacturer: DEPRAG SCHULZ GMBH & CO.  
Address: Kurfürstenring 12 - 18 PO Box 1352  
D-92224 Amberg D-92203 Amberg  
Phone: 09621/371-0  
Fax: 09621/371120  
  
Subsidiary: DEPRAG INC.  
Address: 640 Hembry Street  
Lewisville, TX 75057  
Phone: (800) 4 DEPRAG = (800) 433-7724  
Fax: (214) 221-8163

<b>Model No.</b>	<b>130F10LZ</b>	<b>130F10LZ</b>
<b>Part No.</b>	444520 B	444520 C
Air Inlet	G 3/4"	
Exhaust (inch)	rear exhaust	lateral exhaust
Speed (unloaded) rpm	160	
Air consumption, under load (l/s)	2	
Power Output (W)	2.2	
Body-ø (mm) / inch	126 / 4 7/8	
Length (mm) / inch	273 / 10 3/4	
Weight (kg) / pounds	14.5 / 31.9	
Hose ID (mm)	15	
Noise Level with installed silencer	82 dB(A)	
Vibration m/s <sup>2</sup>	< 2,5	

#### 4. Maintenance and Upkeep

If the following service rules are observed, the motor will have a long life expectancy and will remain in a safe condition to use.

Check your maintenance unit on a regular basis. Bleed filter periodically, to remove excess fluid from water container. Make sure that sufficient oil is in the lubricator (if lubrication is used) and that the lubricator adjustment is correct. Oiling: approx. 1 - 2 drops per 1 m<sup>3</sup> air consumption.

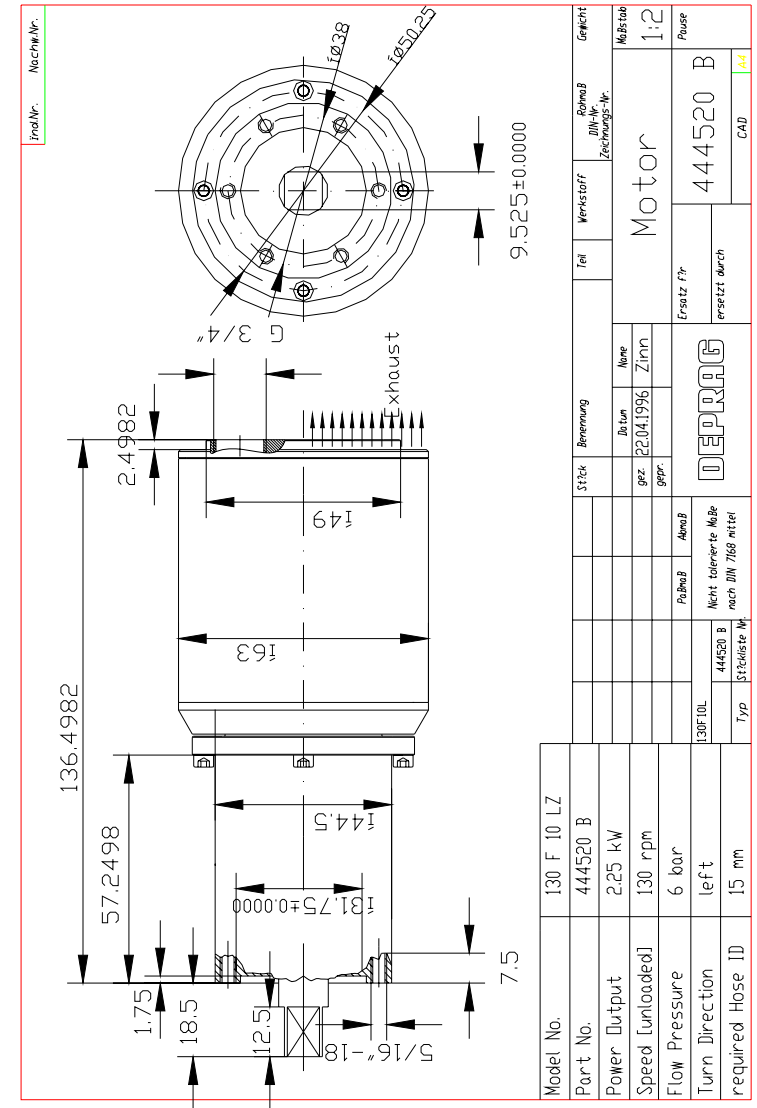
The gears, ball bearings, needle bearings as well as o-rings should be greased during scheduled maintenance. Our Molykote BR2 Plus Grease, part # 807293 increases the greasing intervals. If motor has not been used for a longer time, it is recommended to drip several drops of oil into the air inlet and let motor run for about 5 - 10 seconds.

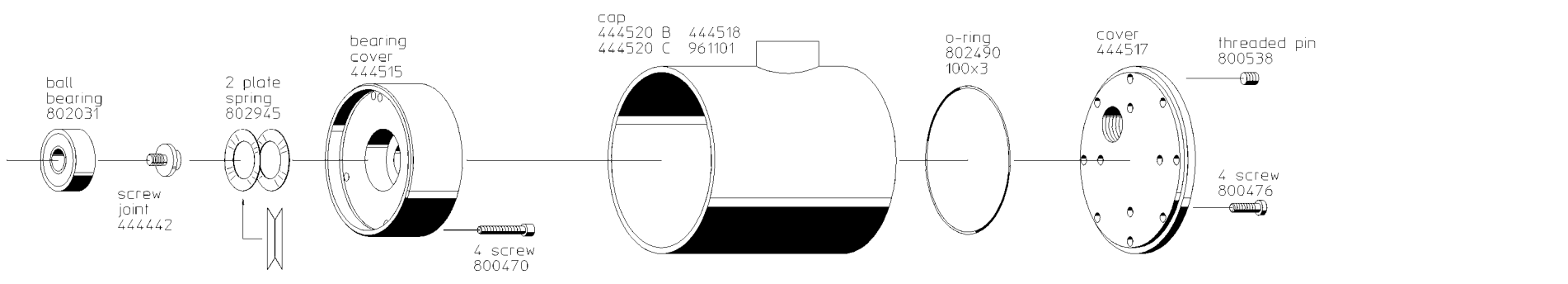
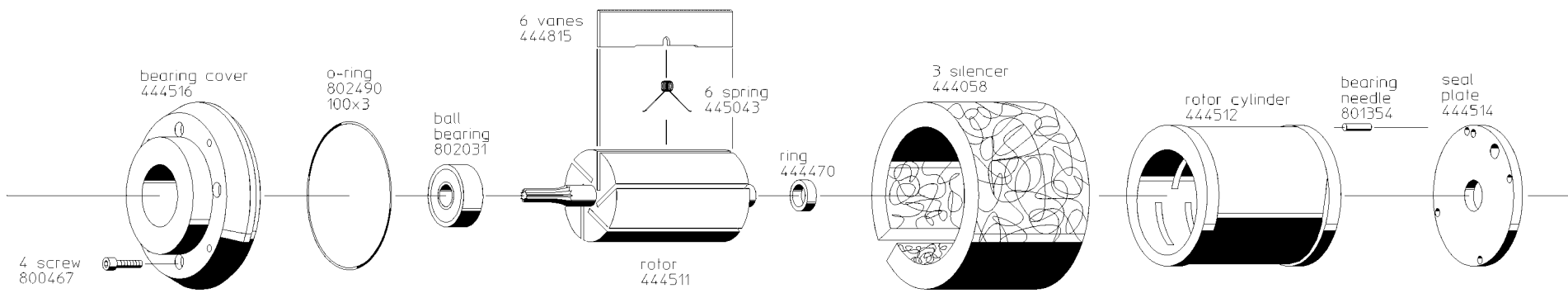
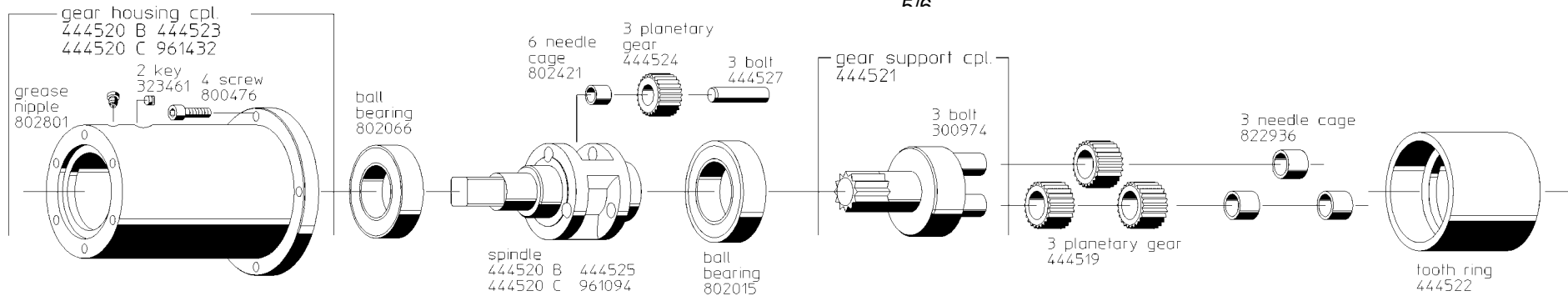
If motor is malfunctioning, please send motor to DEPRAG for evaluation.

In regards to air-quality according to ISO8573-1, we recommend:

	CLASS	RESIDUE OF OIL		RESIDUE OF DUST		RESIDUE OF WATER	
		Content mg/m <sup>3</sup>	Particle Size μm	Concentration max. mg/m <sup>3</sup>	Dew Point °C	Pressure Concentration max. g/m <sup>3</sup>	
Lubricated Air	4	5	15	8	+3	6	
Dry Air	3	1	5	5	-20	0.88	

Picture 1: Dimensions





Picture 2: Parts Listing